



**IB Series**  
**Model IB800**  
**Assembly Instructions**



# INTRODUCTION

Thank you for purchasing our DETECTO™ IB Series Model IB800 in-bed scale. It has been manufactured with quality and reliability and has been assembled and tested before leaving our factory to insure accuracy and dependability for years to come.

This manual is provided to guide you through the assembly of your scale. Please read it thoroughly before attempting to assemble your scale and keep it handy for future reference.

## COPYRIGHT

All rights reserved. Reproduction or use, without expressed written permission, of editorial or pictorial content, in any manner, is prohibited. No patent liability is assumed with respect to the use of the information contained herein.

## DISCLAIMER

While every precaution has been taken in the preparation of this manual, the Seller assumes no responsibility for errors or omissions. Neither is any liability assumed for damages resulting from use of the information contained herein. All instructions and diagrams have been checked for accuracy and ease of application; however, success and safety in working with tools depend to a great extent upon the individual accuracy, skill and caution. For this reason the Seller is not able to guarantee the result of any procedure contained herein. Nor can they assume responsibility for any damage to property or injury to persons occasioned from the procedures. Persons engaging the procedures do so entirely at their own risk.



### **DANGER! NOT A PATIENT TRANSPORT DEVICE!**

This scale is **NOT** intended for use in transporting patients! It is to be used **ONLY** for weighing a patient. Failure to observe this warning may result in serious injury to the patient and/or the scale operator.

## PRECAUTIONS

Before beginning assembly of this scale, read this manual and pay special attention to all "NOTIFICATION" symbols:



**IMPORTANT:**

# ASSEMBLY INSTRUCTIONS

The IB Series Model IB800 in-bed scale is shipped disassembled in three (3) separate cartons. Carefully inspect all cartons for damage that may have taken place during shipment. It is the responsibility of the purchaser to file all claims with the shipping company for damages or loss incurred during transit.

## Packing Checklist

**NOTE:** All nuts, bolts or screws are already in position on the scale and “finger tight”. No hardware is package separately. Contents of cartons should include:

✓	Item Description	Part Number	Qty
	<b>Carton 1</b>		
<input type="checkbox"/>	Base Assembly	0046-D217-0A	1
<input type="checkbox"/>	Column Weldment	0046-D277-0A	1
	<b>Carton 2</b>		
<input type="checkbox"/>	Boom Assembly	0046-C279-0A	1
<input type="checkbox"/>	Hydraulic Cylinder	6540-1119	1
<input type="checkbox"/>	Handle Extension	0046-B242-08	1
<input type="checkbox"/>	Indicator / Handle Assembly	0046-B549-1A	1
<input type="checkbox"/>	Stretcher Hoop	0046-D261-08	2
<input type="checkbox"/>	Stretcher Cup	0046-B005-08	1
<input type="checkbox"/>	Anti-Swing Bar	0046-B518-08	2
<input type="checkbox"/>	*0.5 ml Capsule, Loctite®	6560-1046	1
<input type="checkbox"/>	Indicator	Model 750	1
	<b>Carton 3</b>		
<input type="checkbox"/>	Stretcher Support Bars	0046-C248-08	2
<input type="checkbox"/>	Stretcher	0046-C247-08	1

\*The capsule of Loctite® is in a plastic bag taped to the Boom Assembly.

## Tools Required

The following tools are required to assemble the IB Series Model IB800 in-bed scale:

1/2" drive ratchet wrench

1/2" drive 15/16" and 3/4" standard socket

15/16", 1/2" and 7/16" wrench (open end, box end, or combination)

5/16" and 3/16" Allen wrench

Small Flat Blade Screwdriver

## Unpacking



**IMPORTANT: UNPACKING AND ASSEMBLY OF THIS PRODUCT REQUIRES TWO PEOPLE. PLEASE READ THROUGH THE INSTRUCTIONS CAREFULLY BEFORE STARTING TO ASSEMBLE THE SCALE.**

Remove the shipping straps and packing material to unpack the IB Series Model IB800 in-bed scale. Check the parts against the PACKING CHECKLIST. If any are damaged or missing, please contact our Parts Department at 1-800-641-2045 or by email at parts@cardet.com.



**NOTE: Leave the shipping straps and packing material on the Boom Assembly until instructed to remove it in Step 7.**



**Carton 1**



**Carton 2  
Upper Section**



**Carton 2  
Lower Section**



**Carton 3**

## Step 1 – Prepare the Base Assembly

1. With the help of an assistant, remove the Base Assembly from Carton 1.
2. Next, remove the Column Assembly from Carton 1.

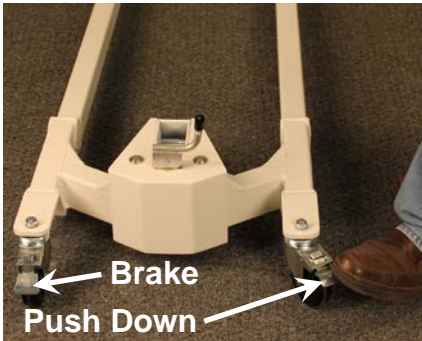


**Remove Base Assembly**



**Remove Column Assembly**

3. Set the brakes on the rear wheels.
4. Install the Handle Extension with Grip on the base assembly. *Hand-tighten only.*

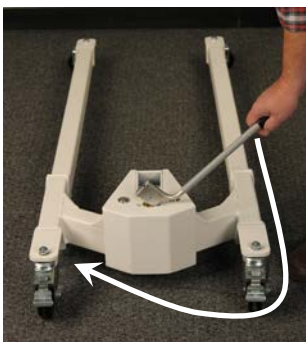


**Set Brakes on Rear Wheels**



**Install Handle Extension**

5. Widen the stance of the Base Assembly by pushing the Handle down to the right to release the locking pin and then rotate it in a clockwise direction.
6. Continue to rotate the handle clockwise until the stance widens completely.
7. Return the handle to a vertical position to engage the locking pin.



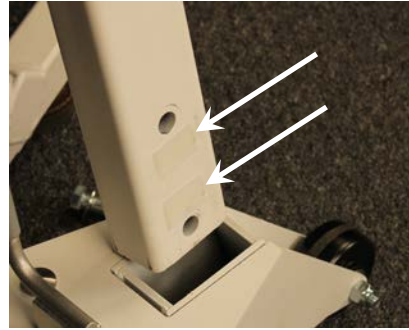
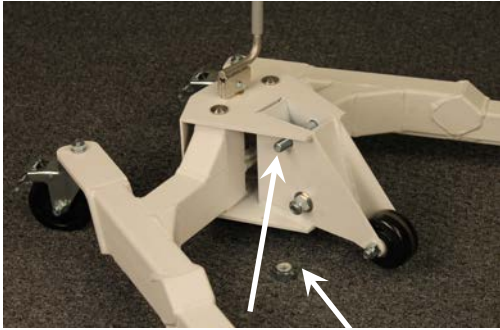
**Releasing the Locking Pin**



**Base at full wide stance**

## Step 2 – Install Column Assembly

1. Remove the (2) 5/8-11 elastic stop nuts and 5/8" flat washers from the (2) 5/8-11 x 3 1/2" hex head bolts in the base assembly, then slide the (2) bolts with washers out of the base



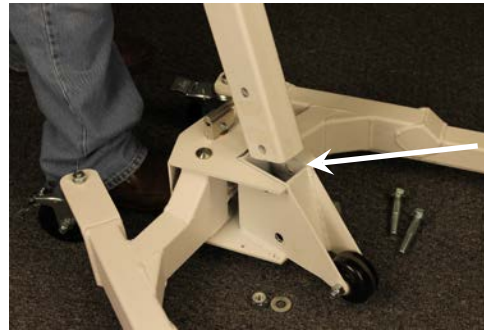
assembly. Use the 1/2" drive ratchet with the 15/16 socket and 15/16" wrench if needed.

### Location of Plastic Shim(s)

2. Place the Column Assembly into the rectangular opening of the base assembly until it stops. **NOTE:** The opening in the base assembly is angled back away from the leg assemblies of the base. The column assembly must be inserted at an angle and then slid into the opening. Take care not to strike the plastic shim(s), (one or two may be installed on each side of the column) against the edge of the hole in the base assembly.



**Insert Column at an angle**



**Rectangular opening in Base**



**Install Bolts, Washers & Nuts**

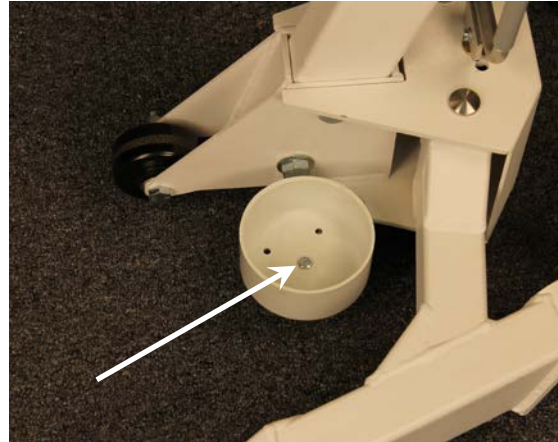
3. Insert the (2) 5/8-11 x 3 1/2" hex head bolts (with 5/8" flat washers) removed in step 1 through the holes in the base assembly. Next, install the 5/8" flat washers and 5/8-11 elastic stop nuts removed in step 1 on each bolt and tighten. Use the 1/2" drive ratchet with the 15/16 socket and 15/16" wrench to tighten.

### Step 3 – Install Stretcher Cup

1. Remove the 1/4-20 x 1/2" hex head bolt from the Stretcher Cup mounting bracket. *Use the 7/16 wrench if needed.*
2. Place the Stretcher Cup on the mounting bracket, align the center hole in the cup with the hole in the mounting bracket and secure with the 1/4-20 x 1/2" hex head bolt. *Use the 7/16 wrench to tighten.*



**Use center mounting hole**



**Stretcher Cup Installed**

### Step 4 – Install Boom Assembly

1. Remove the 1/2-13 elastic stop nut and 5/8" split lock washer from the 5/8 x 2 1/2" shoulder bolt in the column assembly and then slide the bolt out of the column assembly. *Use the 1/2" drive ratchet with the 3/4" socket and 5/16" Allen wrench if needed.*
2. With the help of an assistant, place the Boom Assembly between the mounting plates of the column assembly and align the hole in the boom assembly with the holes in the column assembly mounting plates.
3. Insert the 5/8 x 2 1/2" shoulder bolt removed in step 1 through the hole in the mounting plate of the column assembly. Next, install the 5/8" split lock washer and 1/2-13 elastic stop nuts removed in step 1 and tighten. *Use the 1/2" drive ratchet with the 3/4" socket and 5/16" Allen wrench to tighten.*



**Remove Bolt from Column**

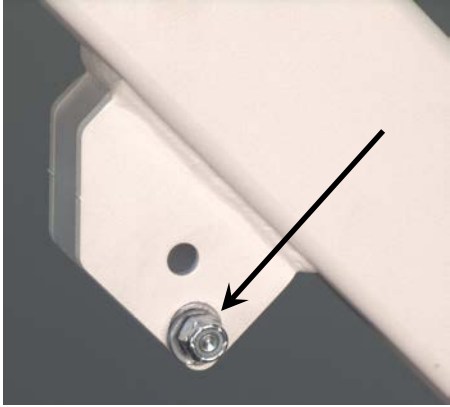


**Have an assistant hold the Boom Assembly while inserting the bolt**



## Step 5 – Install Hydraulic Cylinder

1. Lower the boom assembly and remove the 5/16-18 elastic stop nut and 3/8" split lock washer from the 5/16-18 x 1/2" socket head shoulder bolt in the boom assembly, then slide the bolt out of the boom assembly. **IMPORTANT:** Note the location of the bolt in the cylinder mounting plate; it must be re-installed in the same location. *Use the 1/2" wrench and 3/16" Allen wrench if needed.*

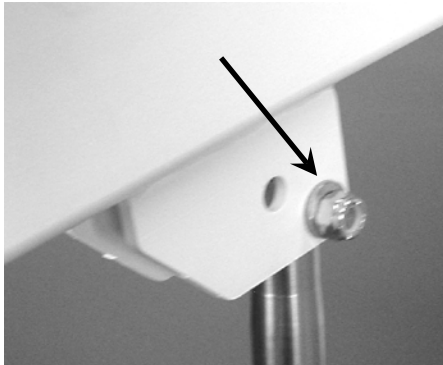


**Note original location of Bolt**



**Remove Bolt, Washer & Nut**

2. While the assistant is holding the boom assembly up, place the shaft end of the hydraulic cylinder (end with the hole) between the cylinder mounting plates in the boom assembly and then align the hole in the shaft with the holes in the mounting plates.
3. Insert the 5/16-18 x 1/2" socket head shoulder bolt into the hole (where it was removed in step 1) in the mounting plate, through the cylinder shaft and out the mounting plate. Next, install the 3/8" split lock washer and 5/16-18 elastic stop nut removed in step 1 and tighten. *Use the 1/2" wrench and 3/16" Allen wrench to tighten.*



**Bolt installed in correct location**



**Align ball end with ball socket  
*Hand-tighten only!***

4. Next, align the ball end of the hydraulic cylinder with the ball socket on the column assembly and insert the ball into the socket. Tighten the cylinder nut to hold in place. *Hand-tighten only.*

## Step 6 – Install Push Handle

1. Remove the (4) 1/4-20 x 1/2" hex head bolts (two on each side) from the column assembly. *Use the 7/16" wrench if needed.*

### Remove Push Handle Bolts



2. Place the Push Handle on the column assembly (the opposite direction of the legs) and align the bottom hole in the handle mounting bracket with the bottom hole in the column assembly. Insert a 1/4-20 x 1/2" hex head bolt through the hole and finger tighten.

### Install bottom Bolt and finger tighten



3. Align the top hole in the handle bracket with the top hole in the column assembly and insert a 1/4-20 x 1/2" hex head bolt through the hole and finger tighten.

### Install top Bolt and then tighten both Bolts

4. Repeat steps 2 and 3 for the push handle bolts on the other side of the column assembly.
5. Completely tighten all bolts to secure the push handle to the column assembly. *Use the 7/16" wrench to tighten.*

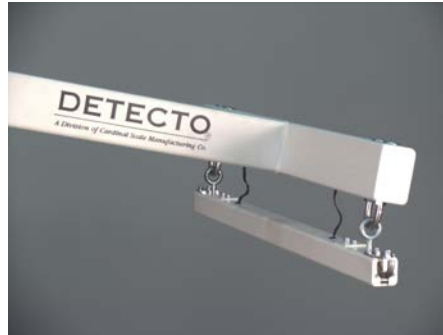


## Step 7 – Install Stretcher Support Hoops

1. Remove the shipping straps and packing on the boom assembly and load cell tube.



**Remove Packing & Straps**



**Packing & Straps Removed**

2. Remove the outer (2) 1/4-20 x 1/2" socket head screws on the end of load cell tube. Next, loosen the single inner 1/4-20 x 1/2" socket head screw enough to rotate the hoop retainer plate to one side. *Use the 3/16" Allen wrench if needed.*



**Remove outer 2 Screws  
Loosen inner Screw**



**Rotate Hoop Retainer Plate**

3. Align the hole in the stretcher support hoop with the hoop support hook on the load cell tube and place on the support hook.



**Align hole in Stretcher Hoop  
with Support Hook**



**Stretcher Hoop Installed**

## Step 7 – Install Stretcher Support Hoops, Cont.

4. Rotate hoop retainer plate until two outer holes align with the holes in the load cell tube.
5. Remove Loctite® from plastic bag and follow instructions on bag to prepare Loctite®.
6. Apply a small amount of Loctite® to the threads of the (2) 1/4-20 x 1/2” socket head screws removed in step 2.



**Apply a small amount of Loctite® to screw threads**

7. While slightly lifting the hoop, insert the screws through the holes in the hoop retainer plate and finger tighten.



**Lift hoop slightly to ease screw installation**



**Completely tighten all three retainer plate screws**

8. Completely tighten all three screws to secure the hoop retainer plate to the load cell tube weldment. *Use the 3/16” Allen wrench to securely tighten.*
9. Repeat steps 2 through 8 to install the stretcher support hoop on the other end of the load cell tube.

## Step 8 – Install the Model 750 indicator

1. Remove the indicator from its box and unpack it. Obtain and install six “AA” batteries in the indicator.
2. Route the coiled load cell cable from the boom assembly around the boom and down through the indicator mounting bracket between the bracket supports.



**Route cable around boom...**



**and down through bracket**

3. Turn the indicator face down (display away from you). Locate the 9-pin load cell connector on the bottom rear panel of the indicator. Align the long edge of the load cell cable connector with the long edge of the indicator connector. Place the load cell cable connector on the indicator connector and secure using the load cell cable retaining screws. *Use the small flat blade screwdriver to securely tighten.*



**Install load cell cable and secure with cable connector retaining screws**



**Align screw heads with large end of slotted holes and pull down to secure indicator**

4. Place the screw heads on the back of the indicator into the large end of the slotted holes in the bracket. Pull down to secure the indicator. The spring plunger will lock the indicator to the bracket.

**NOTE: For more detailed information on installing the batteries, mounting the indicator on the scale bracket and connecting the load cell cable, refer to the 750 Owner's Manual, 8555-M483-O1.**

## Step 9 – Install the Stretcher

1. Remove the pre-assembled Stretcher and Support Bars from Carton 3 and then remove plastic wrapping and unroll stretcher.



**Remove Stretcher from box, then remove plastic wrapping and unroll stretcher**



**Insure support bars holes are aligned with stretcher openings**

2. **NOTE:** The stretcher support bars may have moved in the stretcher during shipment. Make sure the holes in the stretcher support bars are aligned with the opening in the stretcher and towards the edge of the stretcher. In addition, check that the Velcro® tabs on the end of the stretcher are closed to seal the stretcher support bars in.
3. The stretcher attaches to the stretcher support hoops by inserting the hooked ends through the four holes in the stretcher support bars.



**Attach stretcher to hooked ends of support bars**



**Store stretcher in stretcher cup when not in use**

4. For transport and storage, store the stretcher in the Stretcher Cup at the base of the scale and secure to the column assembly with the Velcro® straps. Secure the stretcher support hoops to the column using the Anti-Swing Bars, attaching the rear anti-swing bar to the cylinder with the Velcro® strap.

# STATEMENT OF LIMITED WARRANTY

DETECTO warrants its equipment to be free from defects in material and workmanship as follows: DETECTO warrants to the original purchaser only that it will repair or replace any part of equipment which is defective in material or workmanship for a period of **two (2) years from date of shipment**. Detecto shall be the sole judge of what constitutes a defect.

During the **first ninety (90) days** DETECTO may choose to replace the product at no charge to the buyer upon inspection of the returned item.

**After the first ninety (90) days**, upon inspection of the returned item, DETECTO will repair or replace it with a remanufactured product. The customer is responsible for paying for the freight both ways.

This warranty does not apply to peripheral equipment not manufactured by DETECTO; this equipment will be covered by certain manufacturer's warranty only.

This warranty does not include replacement of expendable or consumable parts. This does not apply to any item which has deteriorated or damaged due to wear, accident, misuse, abuse, improper line voltage, overloading, theft, lightning, fire, water or acts of God, or due to extended storage or exposure while in purchaser's possession. This warranty does not apply to maintenance service. Purchased parts will have a ninety (90) day repair or replacement warranty only.

DETECTO may require the product to be returned to the factory; item(s) must be properly packed and shipping charges prepaid. A return authorization number must be obtained for all returns and marked on the outside of all returned packages. DETECTO accepts no responsibility for items lost or damaged in transit.

## Conditions Which Void Limited Warranty

This warranty shall not apply to equipment which:

- A.) Has been tampered with, defaced, mishandled or has had repairs and modifications not authorized by DETECTO.
- B.) Has had serial number altered, defaced, or removed.
- C.) Has not been properly grounded according to Detecto's recommended procedure.

## Freight Carrier Damage

Claims for equipment damaged in transit must be referred to the freight carrier in accordance with freight carrier regulations.

This warranty sets forth the extent of our liability for breach of any warranty or deficiency in connection with the sale or use of the product. DETECTO will not be liable for consequential damages of any nature, including but not limited to, loss of profit, delays or expenses, whether based on tort or contract. Detecto reserves the right to incorporate improvements in material and design without notice and is not obligated to incorporate improvements in equipment previously manufactured.

The foregoing is in lieu of all other warranties, express or implied including any warranty that extends beyond the description of the product including any warranty of merchantability or fitness for a particular purpose. This warranty covers only those DETECTO products installed in the forty-eight (48) contiguous continental United States.



Ph. (800) 641-2008  
E-mail: [detecto@cardet.com](mailto:detecto@cardet.com)  
102 E. Daugherty  
Webb City, MO 64870

04/22/2024  
Printed in USA  
D268-WARRANTY-DET-B



*DETECTO*

*102 E. Daugherty, Webb City, MO 64870 USA*

*Ph: 417-673-4631 or 1-800-641-2008*

*Fax: 417-673-2153*

*[www.Detecto.com](http://www.Detecto.com)*

*Technical Support: 1-866-254-8261*

*E-mail: [tech@cardet.com](mailto:tech@cardet.com)*

Printed in USA

0046-M563-O1 Rev A 02/13