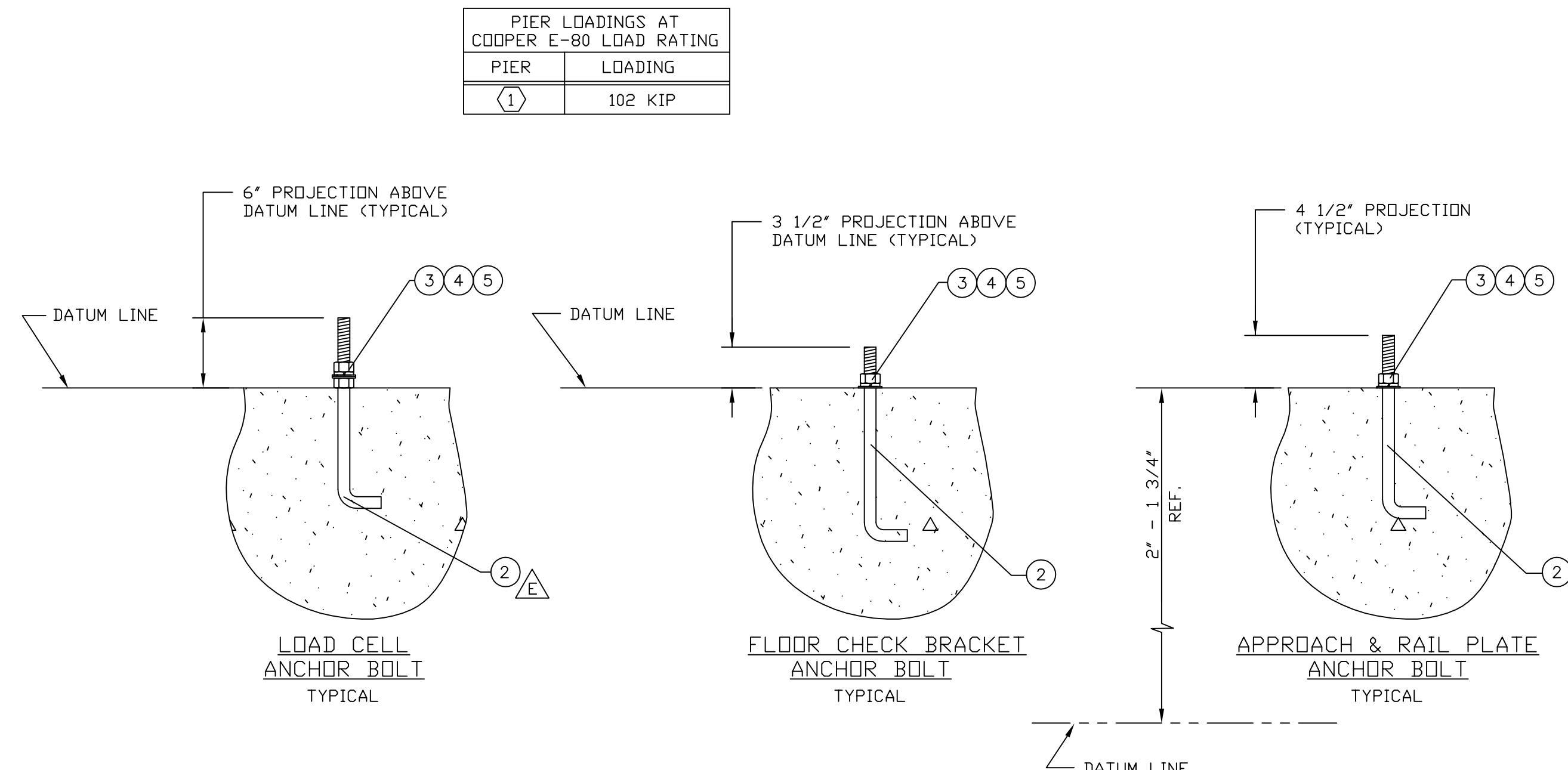
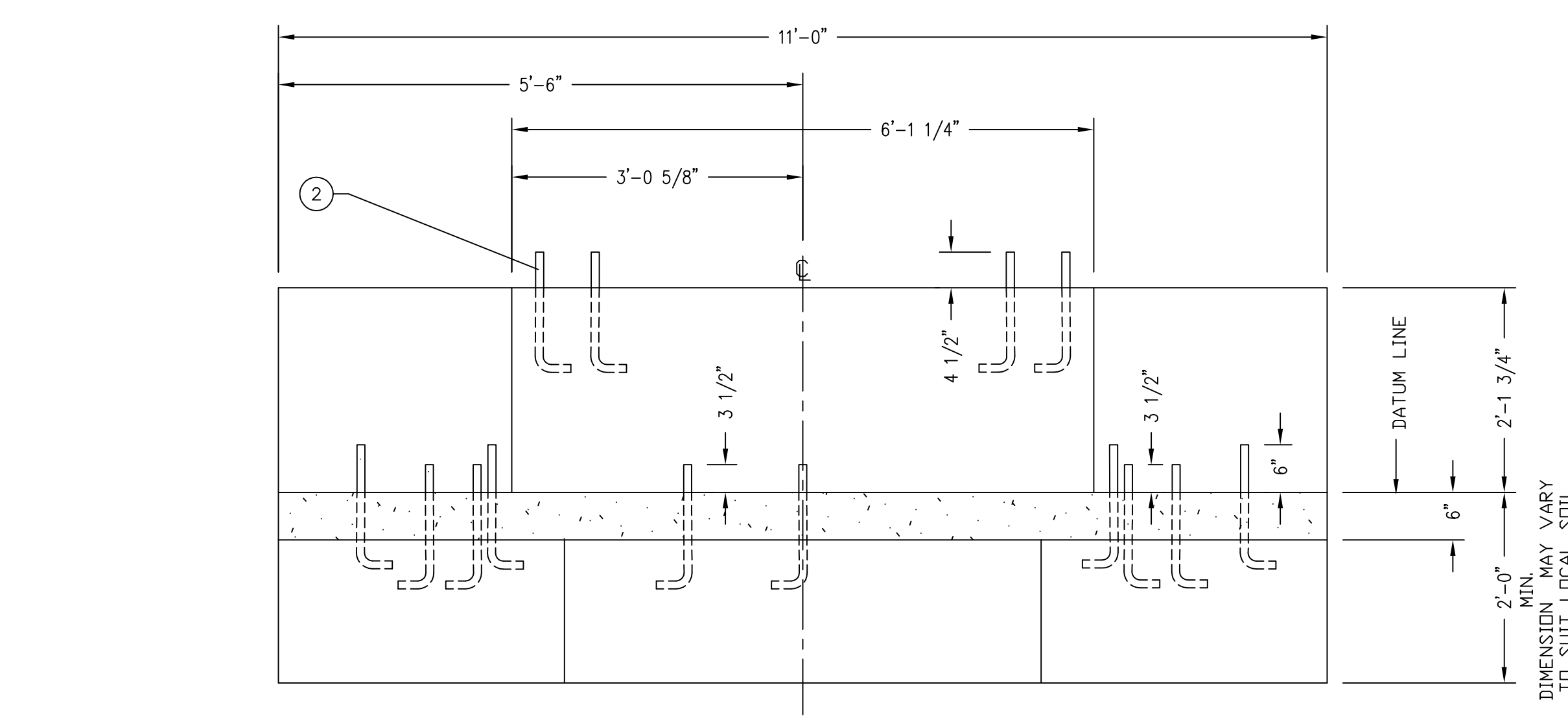
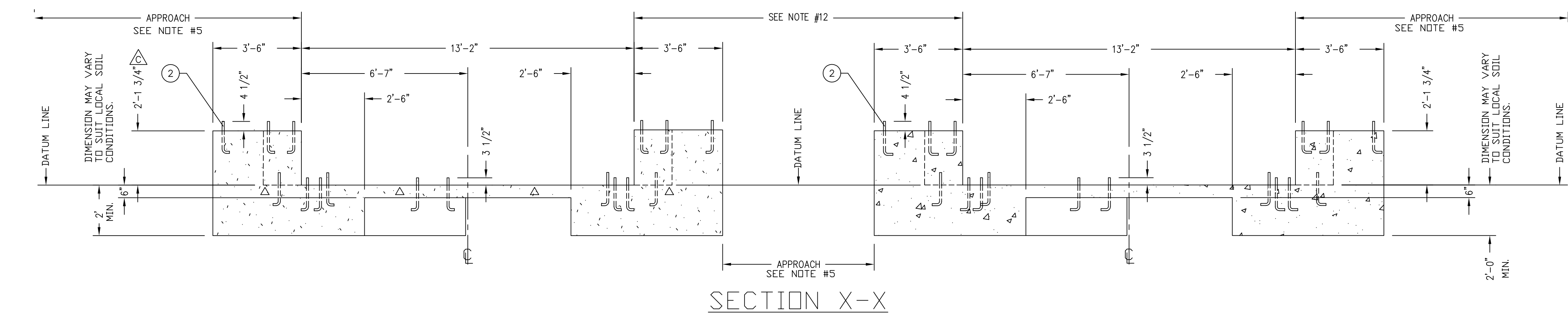
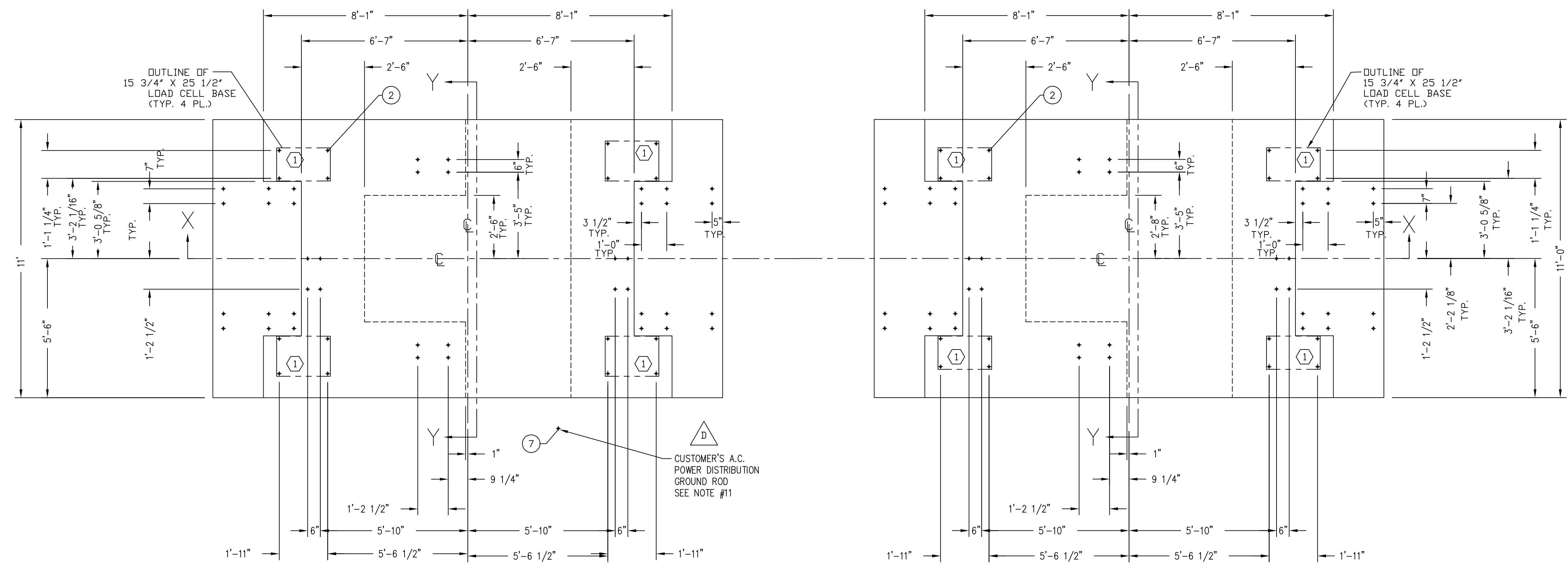


REVISION RECORD			
LTR	DESCRIPTION	DATE	BY
A	RELEASED FOR PRODUCTION	1/9/96	MLS
B	ITEM 1 WAS 6007-0353 HEX HEAD BOLT. ITEM 2 WAS 6007-0351 HEX HEAD BOLT	6/5/97	15666 RN
C	CORRECTED DIMENSION 2'-1 3/4" WAS 2'-2 1/4"	4/30/02	21873 GC/MLS
D	SHOW GROUND ROD LOCATED OFF THE FOUNDATION TO INDICATE USING THE CUSTOMER'S A.C. POWER DISTRIBUTION GROUND ROD.	3/24/06	23438 JAT/SC
E	ALL ANCHOR BOLTS NOW 15" LONG. DELETE ITEM 1 0849-B092-08 ANCHOR BOLT ITEM 2 QUANTITY WAS 80	1/17/13	21256 JAT



FOR REFERENCE ONLY!

QTY.	QTY.	ITEM	PART/DWG. NUMBER	DESCRIPTION	MATERIAL OR SOURCE	WT. EACH
1	7	3502-B011-52		GROUNDING KIT		34.4
6						
144	5	6024-0027		FLAT WASHER	1"	0.19
112	4	6024-0060		LOCK WASHER	1"	0.08
144	3	6013-0165		HEX NUT	1"-8 UNC-2B	0.29
112	2	0849-B091-08		ANCHOR BOLT	15"-8 UNC-2B X 1 1/2" THREAD LENGTH	3.69
1						
525.8		WT.		PARTS/MATERIAL LIST		

UNLESS OTHERWISE SPECIFIED TOLERANCE ON DIMENSIONS ARE:
 ANGLES ± 1/2"
 INTEGERS/FRACTIONS ± 1/16 IN.
 DECIMALS (X) ± .03 IN.
 DECIMALS (.XX) ± .01 IN.
 DECIMALS (.XXX) ± .005 IN.
 NOTE: WHOLE NUMBERS MUST BE WRITTEN XX.000 TO INVOLVE DECIMAL TOLERANCES.

THIS DRAWING IS THE PROPERTY OF THE CARDINAL SCALE MFG. CO. AND SHALL NOT BE USED NOR REPRODUCED EITHER WHOLLY OR IN PART EXCEPT WITH WRITTEN AUTHORIZATION. ALL RIGHTS OF DESIGN OR INVENTION ARE RESERVED.

Cardinal
 Cardinal Scale Manufacturing Co.
 WEBB CITY, MISSOURI 64479

CARDINAL DETECTO FULLER WEIGHING SYSTEMS

TITLE FOUNDATION PLAN: E-80 FULL ELECTRONIC LOW PROFILE RAILWAY TRACK SCALE 13' & 13' LONG A.R.E.M.A.

SCALE	N.T.S.	DO NOT SCALE DRAWING	NEXT ASSEMBLY
DR. MLS	DATE 1/9/96		0862-D027-0A
CH.	DATE		D
MODEL 1313-80 LPRA-120	SHEET 1 OF 1	DWG. NO. 0862-D026-0A	REV. E