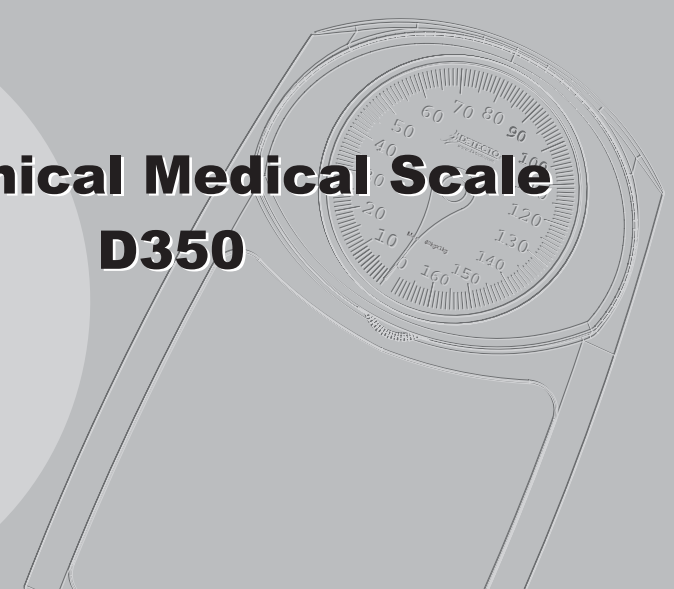




**Mechanical Medical Scale  
D350**





# Medical Scale

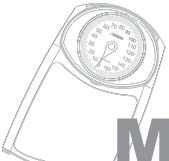
## WEIGHING OPERATION

Note: Before weighing, please make sure your scale set to 0. If necessary, you can set the scale to 0 follow the section **SETTING THE ZEROPOINT AND BALANCE**.

1. Step on the platform and stand still.
2. The weight will be shown on the dial.

## CARE AND MAINTENANCE

- Do not disassemble the scale; it contains no user serviceable parts. Damage to the scale may occur as a result of improper handling.
- Clean the scale after use with a lightly dampened cloth. Do not use solvents or immerse the unit in water.
- Avoid excessive impact or vibration to the scale, such as dropping it onto the floor.



# Medical Scale

- INTRODUCTION..... 3
- PRECAUTIONS OF USE..... 3
- FEATURES..... 3
- PRODUCT DESCRIPTION..... 3
- DIAL DRAWING..... 4
- SETTING THE ZEROPOINT ..... 4
- WEIGHING OPERATION..... 5
- CARE AND MAINTENANCE..... 5



# Medical Scale

## INTRODUCTION

The Mechanical Medical Scale is designed and manufactured in a facility certified in ISO 9001 Quality, ISO 14001 Environment, OHSAS 18001 Health and Safety Management Systems and ISO 13485 Medical Devices Quality Management System.

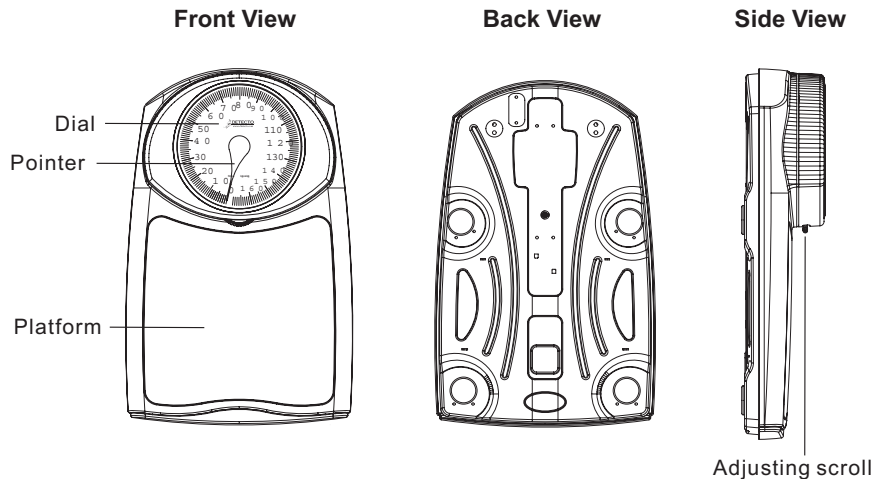
## PRECAUTIONS OF USE

- Remove shipping screw from bottom of scale before use.
- Move out all weight on the platform before measurement.
- Use on the firm and flat surface.

## FEATURES

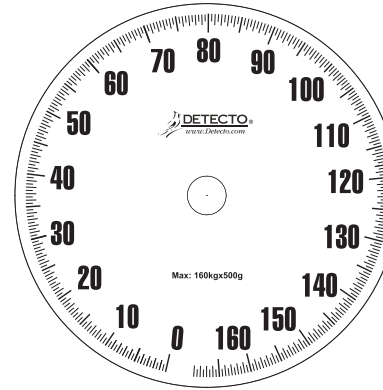
- Weighing function
- Large dial: size 7"
- Capacity: 160kg or 350lb
- Graduation: 500g or 1lb

## PRODUCT DESCRIPTION

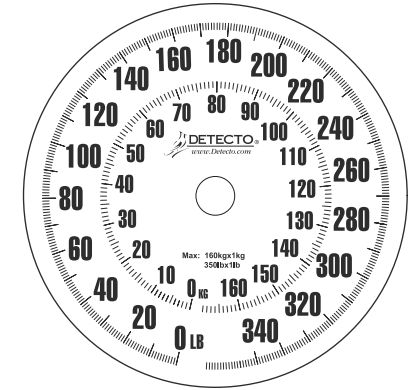


# Medical Scale

## DIAL DRAWING



(KG Dial)



(KG & LB Dial)

## SETTING THE ZEROPOINT

Before you use the scale for the first time or when the scale has been moved to another place, the zeropoint and balance of the scale must be set.

1. Don't step on the scale or/and remove all weight from the platform.
2. Place the scale on hard and flat surface. Adjust the pointer to "Zero" using adjusting scroll.

