



APSPB PUSH BUTTON ZERO

Installation Manual



8527-0579-0M Rev A
12/14

CARDINAL SCALE MFG. CO.
203 E. Daugherty, Webb City, MO 64870 USA
Ph: 417-673-4631 • Fax: 417-673-2153
www.detectoscale.com

Printed in USA

Technical Support: Ph: 866-254-8261 • tech@cardet.com

FCC COMPLIANCE STATEMENT

This equipment generates, uses and can radiate radio frequency and if not installed and used in accordance with the instruction manual, may cause interference to radio communications. It has been designed within the limits for a Class A computing device pursuant to Subpart J of Part 15 of FCC rules to provide reasonable protection against such interference when operated in a commercial environment. Operation of this equipment in a residential area may cause interference in which case the user will be responsible to take whatever measures necessary to correct the interference.

You may find the booklet "How to Identify and Resolve Radio TV Interference Problems" prepared by the Federal Communications Commission helpful. It is available from the U.S. Government Printing Office, Washington, D.C. 20402, stock No. 001-000-00315-4.

COPYRIGHT

All rights reserved. Reproduction or use, without expressed written permission, of editorial or pictorial content, in any manner, is prohibited. No patent liability is assumed with respect to the use of the information contained herein.

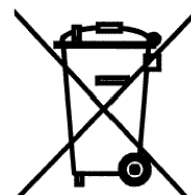
DISCLAIMER

While every precaution has been taken in the preparation of this manual, the Seller assumes no responsibility for errors or omissions. Neither is any liability assumed for damages resulting from use of the information contained herein. All instructions and diagrams have been checked for accuracy and ease of application; however, success and safety in working with tools depend to a great extent upon the individual accuracy, skill and caution. For this reason, the Seller is not able to guarantee the result of any procedure contained herein. Nor can they assume responsibility for any damage to property or injury to persons occasioned from the procedures. Persons engaging the procedures do so entirely at their own risk.

PROPER DISPOSAL

When this device reaches the end of its useful life, it must be properly disposed of. It must not be disposed of as unsorted municipal waste. Within the European Union, this device should be returned to the distributor from where it was purchased for proper disposal. This is in accordance with EU Directive 2002/96/EC. Within North America, the device should be disposed of in accordance with the local laws regarding the disposal of waste electrical and electronic equipment.

It is everyone's responsibility to help maintain the environment and to reduce the effects of hazardous substances contained in electrical and electronic equipment on human health. Please do your part by making certain that this device is properly disposed of. The symbol shown to the right indicates that this device must not be disposed of in unsorted municipal waste programs.



INSTALLATION



MAKE SURE THE POWER TO THE APS SCALE HAS BEEN REMOVED!

Push Button Switch Controller Cable Wiring

1. Remove the switch controller, zero button box, switch controller cable and hardware pack from the shipping carton. You should have the following components:

| QTY. | PART NUMBER | DESCRIPTION |
|------|--------------|-------------------------------------|
| 1 | 8527-0575-0A | APS Series Switch Controller |
| 1 | 8527-0576-0A | APS Series Zero Button Box |
| 1 | 8527-0562-5A | APS Series Switch Controller Cable |
| 4 | 6021-0625 | 6-32x.375" Flat Head Machine Screws |

2. The switch controller cable wires are to be connected to the (P3) terminal block on the APSPB. Refer to Figure No. 1 for an illustration on the connector layout.
3. Referring to the labels on the APSPB and the table below, connect each wire to the terminal block.

P3 – CONTROLLER CABLE WIRING TABLE

| LABEL | CABLE WIRE COLOR |
|-----------|------------------|
| BLU / 12V | BLUE |
| YEL / ON | YELLOW |
| GRN / RX | GREEN |
| RED / TX | RED |
| BLK / GND | BLACK |
| WHT | WHITE |

4. To terminate a wire, loosen the screws in the terminal block and then insert the wire into the terminal opening. Tighten the screw to secure the wire in place.
5. Repeat the procedure until all wires are in place.

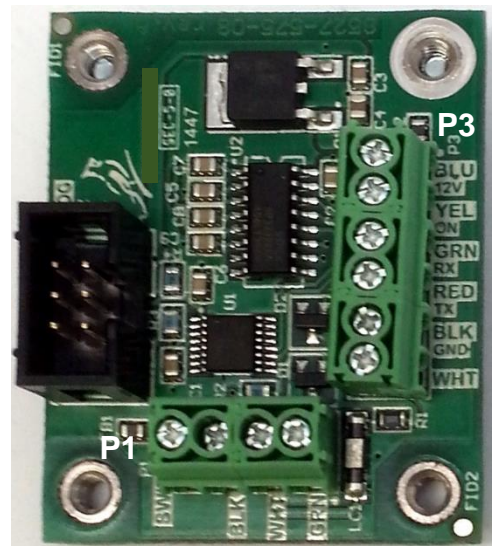


Figure No. 1

Push Button Cable Wiring

1. Remove the scale cover and then turn scale upside down.
2. Locate the opening in the scale base where the display cable exits from inside the scale.
3. Insert the push button cable through the opening and out between the scale base and scale platform.
4. The push button cable wires are to be connected to the SWITCH (P1) terminal block on the APSPB. Refer to Figure No. 1 for an illustration on the connector layout.

SWITCH (P1) – PUSH BUTTON CABLE WIRING TABLE

| LABEL | CABLE WIRE COLOR |
|-------|------------------|
| GRN | not used |
| WHT | WHITE |
| BLK | BLACK |
| blank | not used |

5. To terminate a wire, loosen the screws in the terminal block and then insert the wire into the terminal opening. Tighten the screw to secure the wire in place.
6. Repeat the procedure until all wires are in place

INSTALLATION, CONT.

Push Button Switch Controller Cable Installation

The APSPB is connected to the scale by connecting the switch controller cable from the P3 terminal block on the APSPB and plugging it into the RJ11 snap-in modular connector of either Serial Port 1 or Serial Port 2.

NOTE: If the APSPB is connected to Serial Port 2, the Remote Display can not be used.

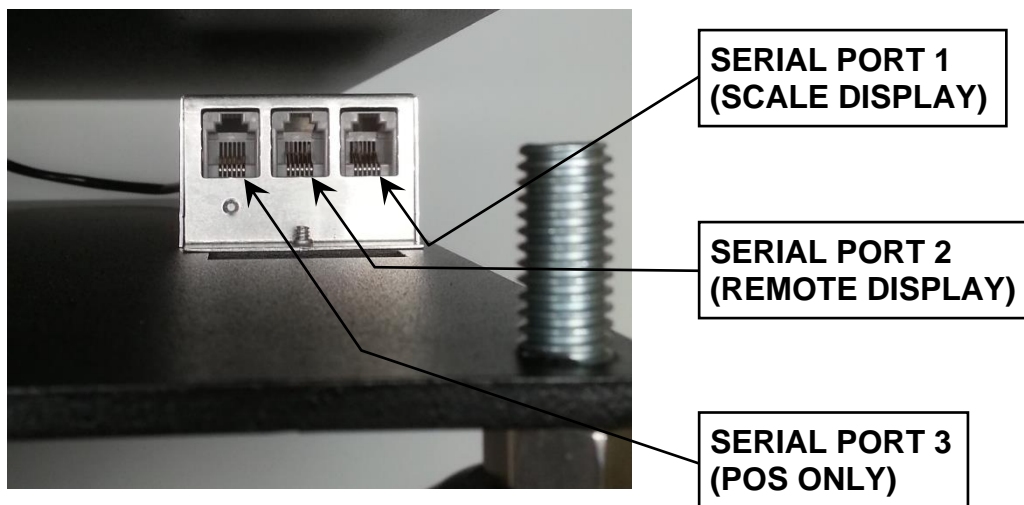


Figure No. 2

Mounting the Push Button Controller

1. The APSPB mounts on the scale base next to the opening where the display cable exits from inside the scale.
2. Locate the four (4) holes next to the opening and position the option card so the threaded standoffs are below the holes. Refer to Figure No. 3.
3. Insert one (1) of the included 6-32x.375" Flat Head Machine Screws and loosely tighten.
4. Repeat Step 3 with the remaining three (3) screws.
5. Fully tighten all screws using a diagonal pattern.
6. Turn the scale right side up and replace the scale cover.
7. The scale is ready for normal use.

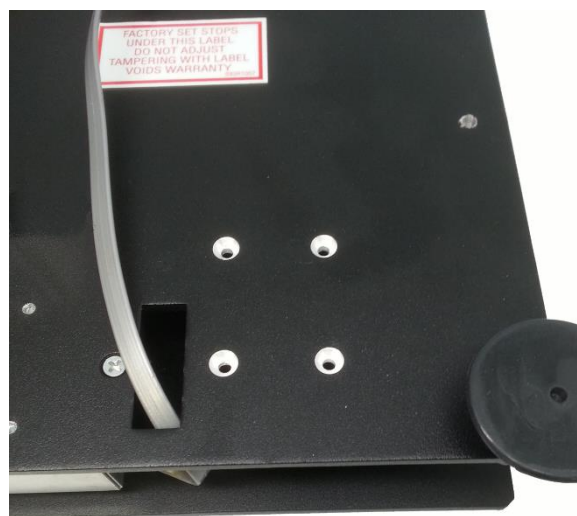


Figure No. 3

OPERATION

The APSPB Push Button has an approximately 3 foot cable to allow it to be placed in a convenient position for the operator. **NOTE:** Ensure that the cable is out of normal traffic.

1. With no weight on scale, press push button switch momentarily.
2. After a brief moment, scale display will show zero weight.
3. The scale is now ZEROED and ready for use.
4. Place item to be weighed on scale (weight of item will be displayed).
5. After completion of weighing operation, remove item from scale.
6. The scale is ready for next weighing operation.

STATEMENT OF LIMITED WARRANTY

Detecto Scale warrants its equipment to be free from defects in material and workmanship as follows: Detecto warrants to the original purchaser only that it will repair or replace any part of equipment which is defective in material or workmanship for a period of two **(2) years from date of shipment**. Detecto shall be the sole judge of what constitutes a defect.

During the **first ninety (90) days** Detecto may choose to replace the product at no charge to the buyer upon inspection of the returned item.

After the first ninety (90) days, upon inspection of the returned item, Detecto will repair or replace it with a remanufactured product. The customer is responsible for paying for the freight both ways.

This warranty does not apply to peripheral equipment not manufactured by Detecto; this equipment will be covered by certain manufacturer's warranty only.

This warranty does not include replacement of expendable or consumable parts. This does not apply to any item which has deteriorated or damaged due to wear, accident, misuse, abuse, improper line voltage, overloading, theft, lightning, fire, water or acts of God, or due to extended storage or exposure while in purchaser's possession. This warranty does not apply to maintenance service. Purchased parts will have a ninety (90) day repair or replacement warranty only.

Detecto may require the suspect product to be returned to the factory; item(s) must be properly packed and shipping charges prepaid. A return authorization number must be obtained for all returns and marked on the outside of all returned packages. Detecto accepts no responsibility for loss or damage in transit.

STATEMENT OF LIMITED WARRANTY

Conditions Which Void Limited Warranty

This warranty shall not apply to equipment which:

- A.) Has been tampered with, defaced, mishandled or has had repairs and modifications not authorized by Detecto.
- B.) Has had serial number altered, defaced, or removed.
- C.) Has not been grounded according to Detecto's recommended procedure.

Freight Carrier Damage

Claims for equipment damaged in transit must be referred to the freight carrier in accordance with freight carrier regulations.

This warranty sets forth the extent of our liability for breach of any warranty or deficiency in connection with the sale or use of the product. Detecto will not be liable for consequential damages of any nature, including but not limited to, loss of profit, delays or expenses, whether based on tort or contract. Detecto reserves the right to incorporate improvements in material and design without notice and is not obligated to incorporate improvements in equipment previously manufactured.

The foregoing is in lieu of all other warranties, express or implied including any warranty that extends beyond the description of the product including any warranty of merchantability or fitness for a particular purpose. This warranty covers only those Detecto products installed in the forty-eight (48) contiguous continental United States.



Ph. (800) 641-2008
E-mail: detecto@cardet.com
203 E. Daugherty
Webb City, MO 64870

08/27/2014
Printed in USA
D268-WARRANTY-DET-A

