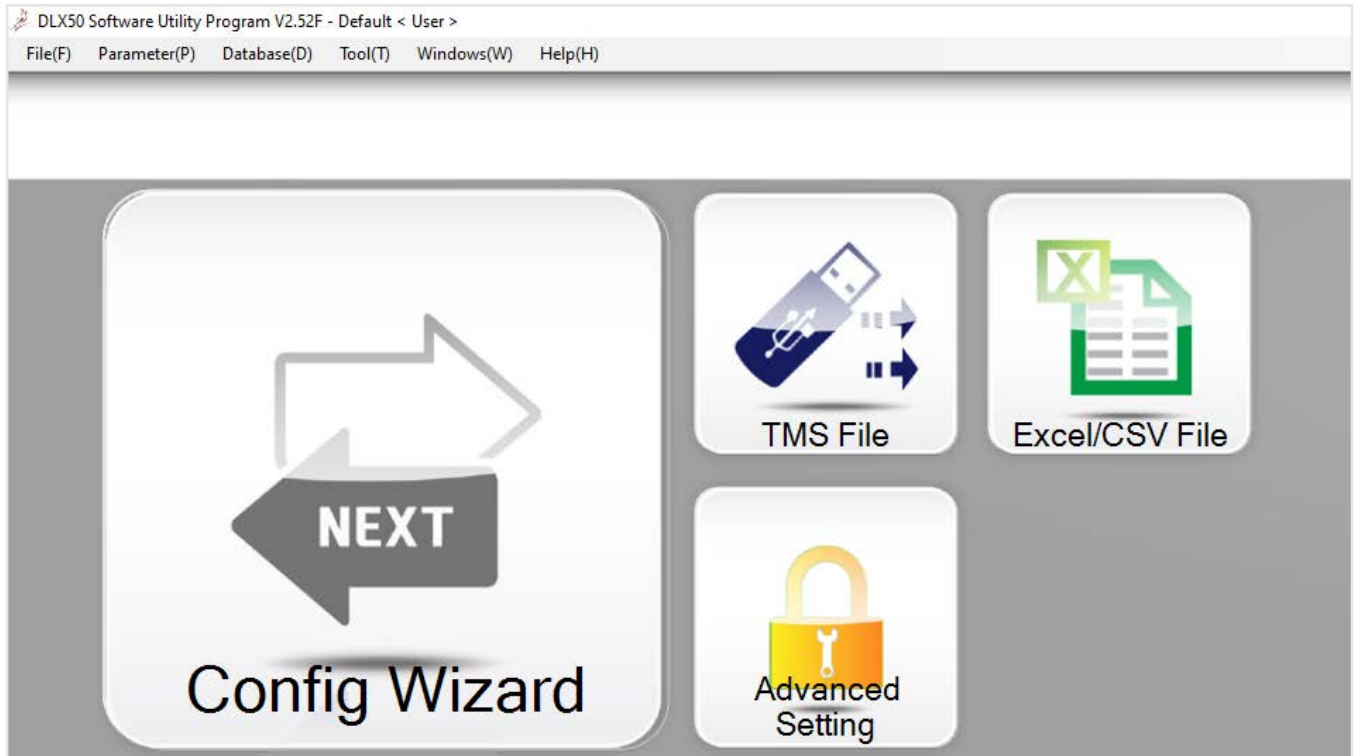


# DETECTO®



**DLX50 DL Series  
Scale PC Utility  
for the DL Series  
Price Computing Scale**



# TABLE OF CONTENTS

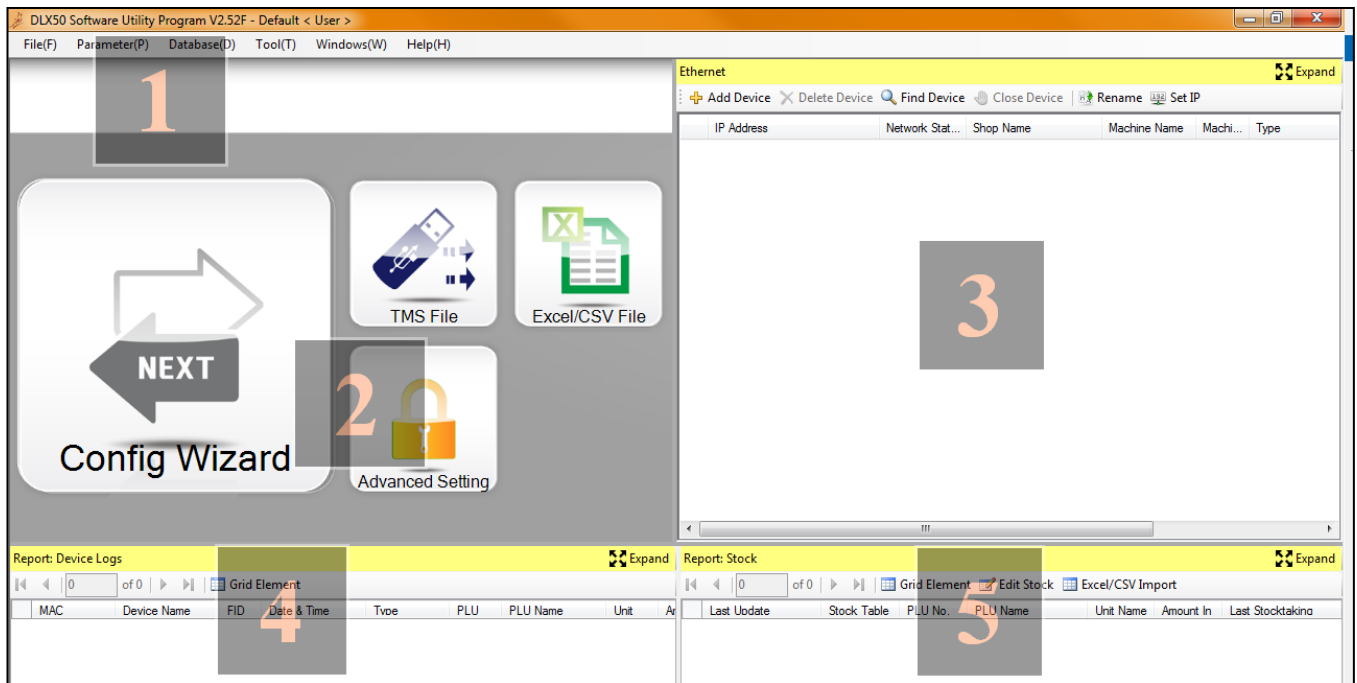
INTRODUCTION . . . . .	1
Home Screen Layout . . . . .	1
INSTALLATION OF THE DLX50 SCALE UTILITY . . . . .	2
Computers with a CD or DVD Drive . . . . .	2
Computers “ <i>without</i> ” a CD or DVD Drive . . . . .	2
DLX50 DL Series Scale PC Utility Download Instructions . . . . .	2
Installation Prompts . . . . .	3
CONNECTING TO THE SCALE . . . . .	7
Establishing an Ethernet Connection Using the LAN . . . . .	7
Using a Direct Connection . . . . .	7
How to Find the IP Address of the Scale . . . . .	9
Adding the Scale to the DLX50 Software . . . . .	10
Setting a Static IP Address for the Scale . . . . .	11
Establishing an RS-232 Serial Connection . . . . .	11
RETRIEVING DATA FROM THE SCALE . . . . .	12
Using a USB Drive . . . . .	12
Using Ethernet . . . . .	14
TRANSFERRING DATA TO THE SCALE . . . . .	15
Using a USB Drive . . . . .	15
Using a RS-232 Serial Connection . . . . .	16
Using Ethernet . . . . .	17
PRICE LOOK-UP (PLU) NUMBERS . . . . .	18
Description of Most Commonly Used PLU Settings . . . . .	18
Creating and Editing a PLU . . . . .	19
Cloning PLUs . . . . .	20
Assigning PLUs to Quick Keys . . . . .	22
SCALE PARAMETERS . . . . .	24
Spec Parameters . . . . .	24
Example of Changing a Spec Parameter . . . . .	24
Global Text Parameters . . . . .	26
Bitmap Builder . . . . .	27
Custom Print Formatting . . . . .	28



# INTRODUCTION

The DLX50 DL Series Scale PC Utility is a flexible and easy-to-use PC-based program with drag-and-drop graphics that allows users full control over PLUs. You can easily create, view, and modify PLUs with the utility. In addition, PLUs that were created at the scale can be viewed and modified as well. Using the utility, you can quickly assign the PLUs to a quick key on the scale and also print the setup page for a key overlay to use on the scale. The utility has a user-friendly graphic interface with over 50 label types available to set up with fully customizable layouts and font sizes and allows custom bitmap graphics to be loaded onto the scale for use in label printing. The customized reporting features provide you with all the information you require to make accurate business decisions for your operation.

## Home Screen Layout



**#1:** Data editing and creation as well as setup modification.

**#2:** Data and setup transfer via USB, RS232, or Excel/CSV file.

**#3:** Data and setup transfer via Ethernet.

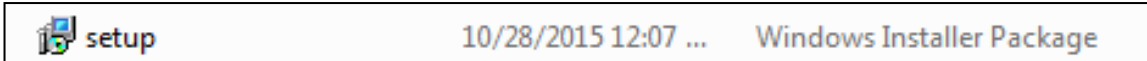
**#4:** Log of individual weighments. Requires Ethernet connection for use.

**#5:** Stocking report. Requires Ethernet connection and is not commonly used by the DL Scale.

# INSTALLATION OF THE DLX50 SCALE UTILITY

## Computers with a CD or DVD Drive

1. Start your computer.
2. Insert DLX50 DL Series Scale Utility Disk into the CD/DVD drive.
3. If Autorun is enabled on the computer, follow the installation prompts. Otherwise, proceed to Step 4.
4. If Autorun is NOT enabled, double-click the “setup” Windows Installer, and follow the installation prompts.



## Computers “without” a CD or DVD Drive

If your computer does not have a CD or DVD drive, you will need to download the DLX50 DL Series Scale PC Utility from Detecto.com at:

<https://detecto.com/resources/software/detail/dlx50-dl-series-scale-pc-utility>

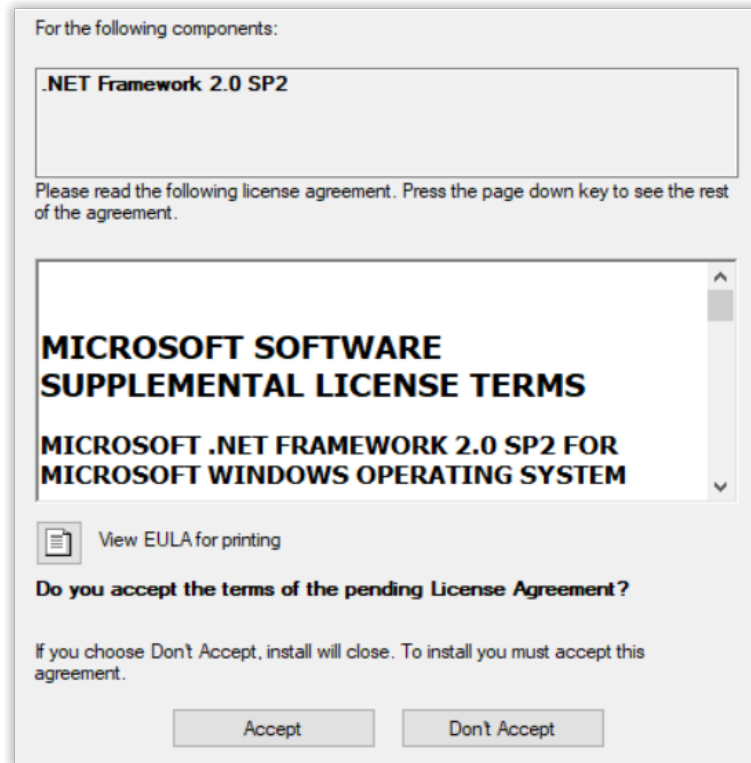
### DLX50 DL Series Scale PC Utility Download Instructions:

1. Download the DLX50-DL-Series-Scale-PC-Utility zip file and save the file to your “Desktop” or a location on the computer such as “Downloads”.
2. Right-click on the file “DLX50-DL-Series-Scale-PC-Utility.zip”.
3. From the menu options, select “Extract All...”.
4. Make sure “Show extracted files when complete” is not selected (no checkmark).
5. Click on the Extract button.
6. Double click on the “DLX50-DL-Series-Scale-PC-Utility” folder on the desktop.
7. Double-click the “setup” Windows installer and follow the installation prompts.

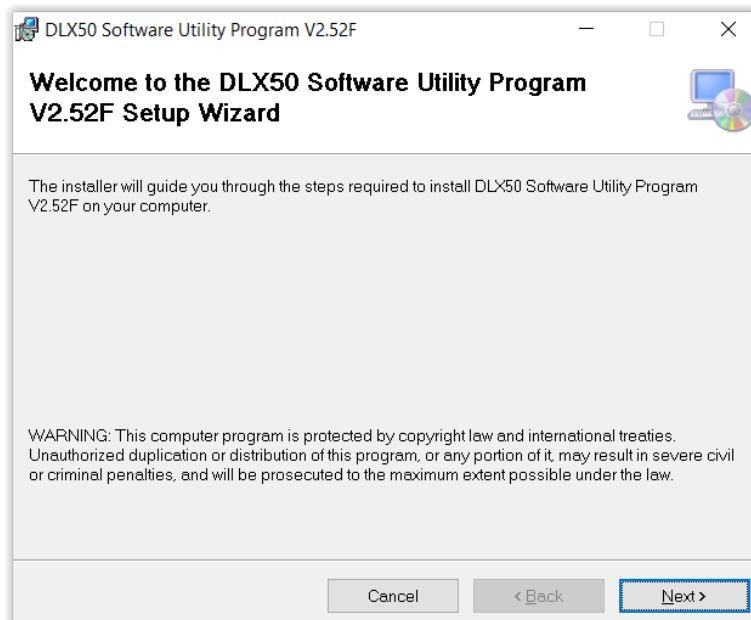
# INSTALLATION OF THE DLX50 SCALE UTILITY, CONT.

## Installation Prompts

1. After inserting the DLX50 DL Series Scale Utility Disk into the CD/DVD drive, or double-clicking on the “setup” Windows installer, your computer may require an update to the “.NET Framework” software from Microsoft. If the Microsoft License screen shown below is displayed, click on the “Accept” button to install the update.



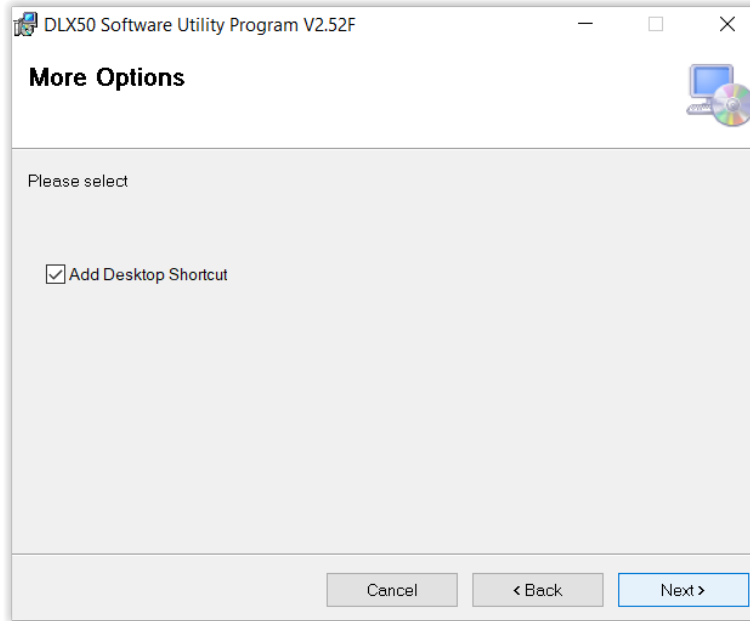
2. When the update to the “.NET Framework” software from Microsoft has been installed, the display will change to show the Welcome Setup Wizard screen.



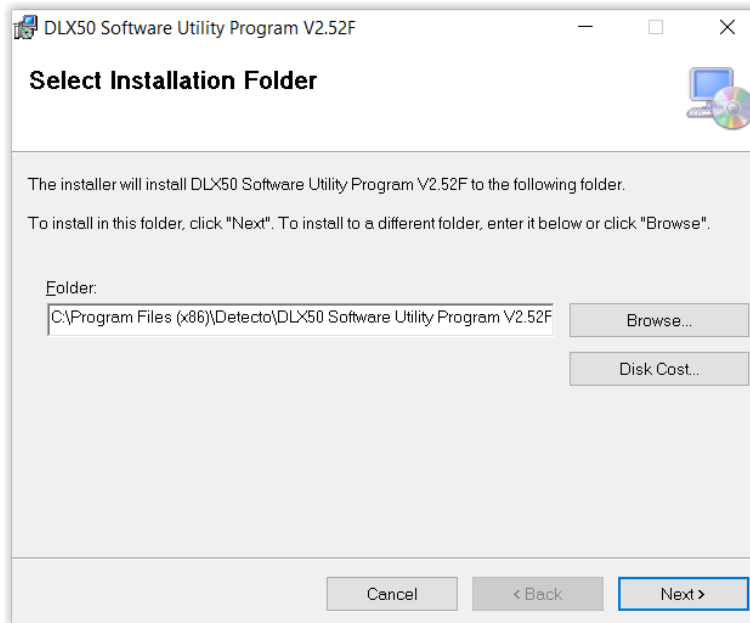
# INSTALLATION OF THE DLX50 SCALE UTILITY, CONT.

## Installation Prompts, Cont.

3. Click the Next button on the Welcome Setup Wizard screen. The display will change to the More Options screen with the Add Desktop Shortcut selected (check-marked).



4. Click on the Next button. The display will change to the Select Installation Folder screen with the default installation folder shown in the box. If a different folder is desired, enter it in the box, or click Browse to select a different folder.

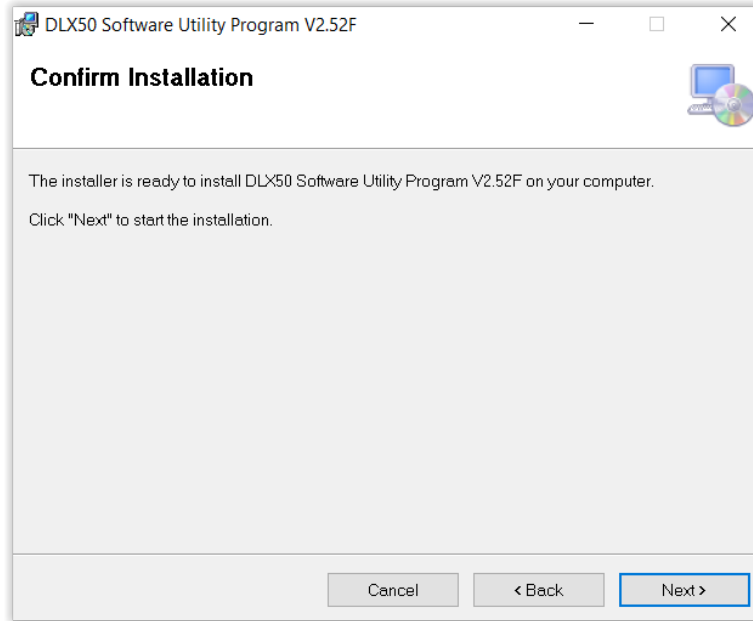




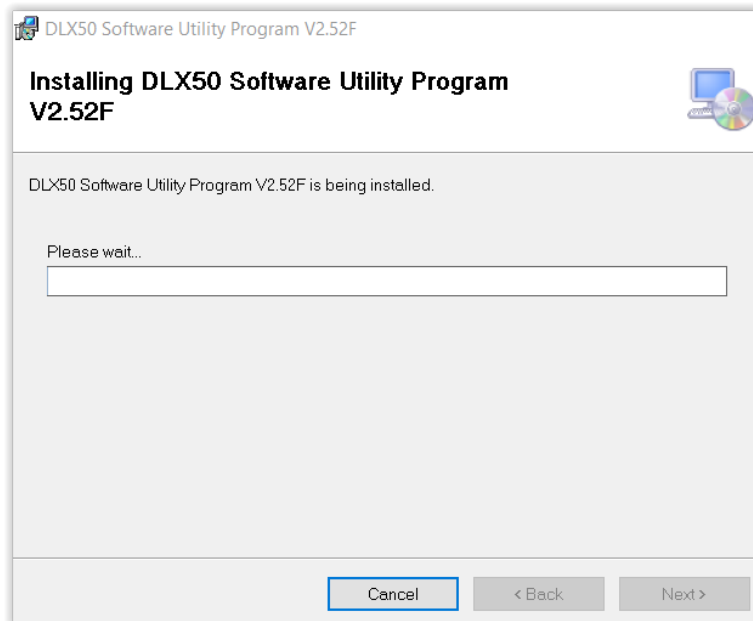
# INSTALLATION OF THE DLX50 SCALE UTILITY, CONT.

## Installation Prompts, Cont.

5. Click the Next button on the Select Installation Folder screen. The display will change to the Confirm Installation.



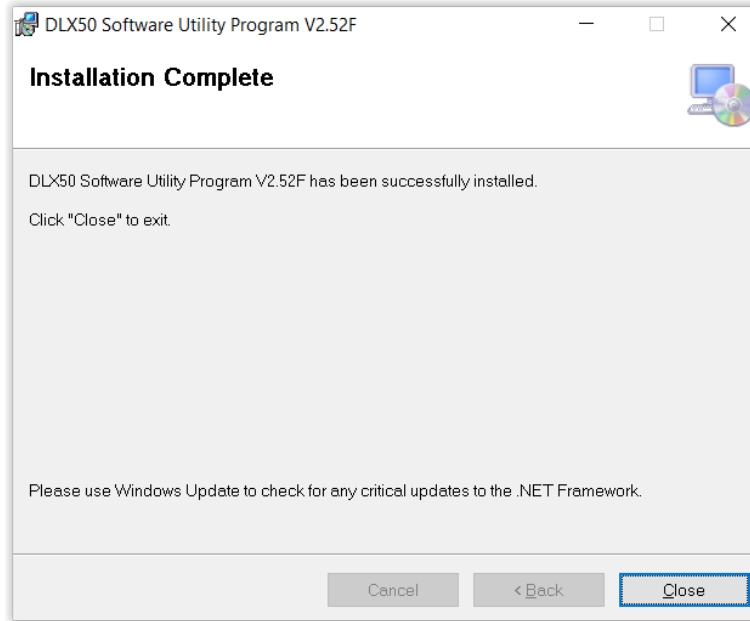
6. Click on the Next button. The display will change to the Installing Program screen.



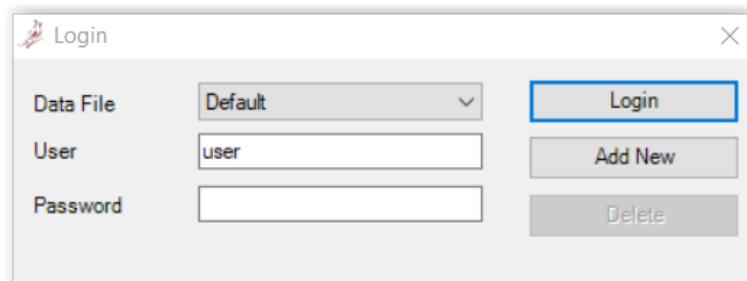
# INSTALLATION OF THE DLX50 SCALE UTILITY, CONT.

## Installation Prompts, Cont.

7. When the installation has been completed, the display will change to the Installation Complete screen. Click on the Close button to exit the installation process.



8. After closing the Installation Complete screen, look for the DLX50 Software Utility Program icon (shown to the right) on the desktop of your computer. The DLX50 Scale Utility installation is complete and ready to begin additional scale setup and program operation.
9. Double-click on the DLX50 Software Utility Program icon. The Login screen will be displayed.



**IMPORTANT!** The default values for the Login screen are:

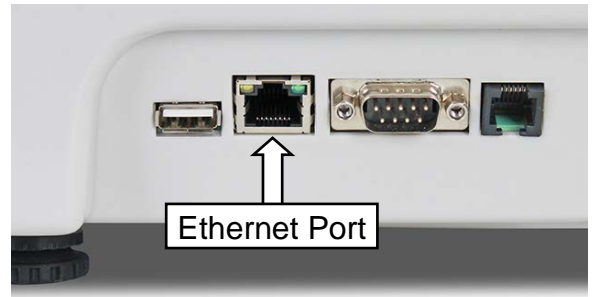
- Data File = Default
- User = User
- Password = blank (no password)

# CONNECTING TO THE SCALE

## Establishing an Ethernet Connection

### Using the LAN

1. With the scale turned off, connect an Ethernet cable to the Ethernet port on the DL Scale and then to the nearest network router/switch.
2. Open the DLX50 scale utility on the PC.
3. With the utility at the Home screen, turn on the DL scale. The device should automatically show up in the Ethernet window of the Home screen.

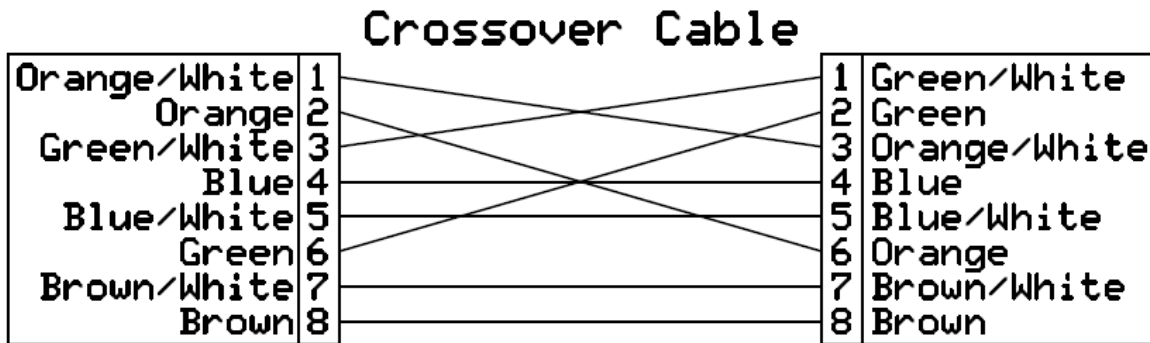


Ethernet						
IP Address	Network Stat...	Shop Name	Machine Name	Machi...	Type	
1	Ready	Factory	Factory Device	0	DETECTO DL Series V2 UA (...)	

**NOTE:** The default of the DL Series scale is to use DHCP protocols to obtain an IP address.

### Using a Direct Connection

If no existing network is available, the DL Scale can communicate using Ethernet to a laptop or other PC that has the DLX50 Utility installed. This connection requires an Ethernet crossover cable connecting the PC to the DL Scale. Refer to the diagram below.



1. You need to establish or verify that the PC has a static IP address. The procedure to establish or verify a static IP address for the PC is available at the following website:

<http://windows.microsoft.com/en-us/windows/change-tcp-ip-settings#1TC=windows-11>



**NOTE:** This procedure defaults to Windows 11, but can easily be changed to Windows 10, Windows 8.1, or Windows 7 by selecting the appropriate operating system of the PC. Make a note of the **IP address**, **Subnet mask**, and the default **Gateway** for use in step 2.

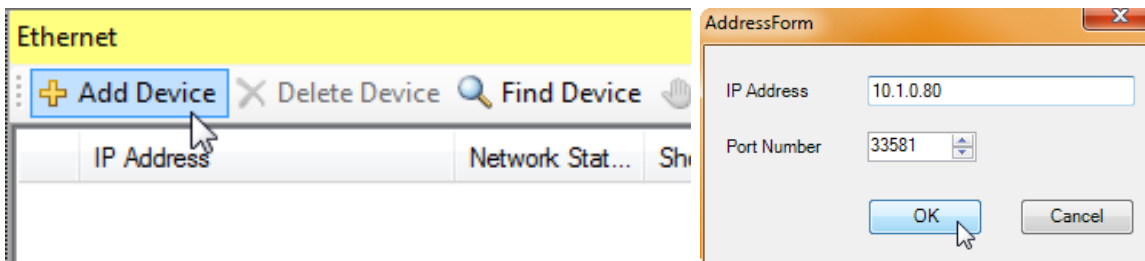
# CONNECTING TO THE SCALE, CONT.

## Using a Direct Connection, Cont.

2. Access the spec parameters of the scale by pressing the **Prog** key, then press the **1** key, and then press the **2** key.
  - 2a. The Weight display will change to show the number of the spec parameter currently being viewed. Note that this is initially SP.000 for spec parameter 000.
  - 2b. Using the **V4** key, step through the parameters until SP.150 is displayed.
  - 2c. Referring to the table below, change the necessary settings, pressing **V4** to move to the next parameter setting.
  - 2d. Press the **Amend** key when these settings have been changed.

Parameter	Setting (indicated by the X)
SP.150	X . . . . same as the IP address of the PC
SP.151	. X . . . same as the IP address of the PC
SP.152	. . . X . same as the IP address of the PC
SP.153	. . . . X <i>different</i> from the IP address of the PC
SP.158	X . . . . Default Gateway same as IP address of PC
SP.159	. X . . . Default Gateway same as IP address of PC
SP.160	. . . X . Default Gateway same as IP address of PC
SP.161	. . . . X Default Gateway same as IP address of PC
SP.162	X . . . . Subnet Mask same as Subnet Mask of PC
SP.163	. X . . . Subnet Mask same as Subnet Mask of PC
SP.164	. . . X . Subnet Mask same as Subnet Mask of PC
SP.165	. . . . X Subnet Mask same as Subnet Mask of PC

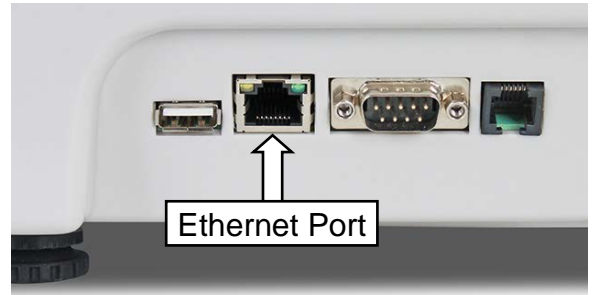
3. From the DLX50 Utility, select +Add Device and then enter the IP address as programmed in the scale in step 2.
4. Verify the port number is set to 33581, and then click OK.



## CONNECTING TO THE SCALE, CONT.

### How to Find the IP Address of the Scale

1. With the DL scale turned off, connect an Ethernet cable to the Ethernet port on the scale and then to the nearest network router/switch.
2. Turn on the DL scale and wait until it is in the normal operation mode (0.00 will be displayed on the four display windows, and the date, time, and day on the dot matrix window).
3. Press the **Prog** key and then use the right arrow key **V4** until the display shows *P4* in the Tare window, *Communication* in the Weight window, and *Communication Prog* is shown on the dot matrix window
4. Press the **Accu/Confirm** key.
5. The display will change to show *P4 1* in the Tare window, *Communication* in the Weight window, *U-disk* in the Weight window, and *Communication Prog USB Disk* on the dot matrix window.
6. Press the right arrow key **V4** once.
7. The display will change to show *P4 2* in the Tare window, *Communication* in the Weight window, *Ethernet* in the Weight window, and *Communication Prog Ethernet* on the dot matrix window.
8. Press the **Accu/Confirm** key.
9. The display will change to show *CRb* in the Tare window, *L* in the Weight window (*for Cable*), the first two digits of the IP address in the Change window, the last two digits of the IP address in the Weight window, and *Cable* *L* and the full IP address on the dot matrix window.

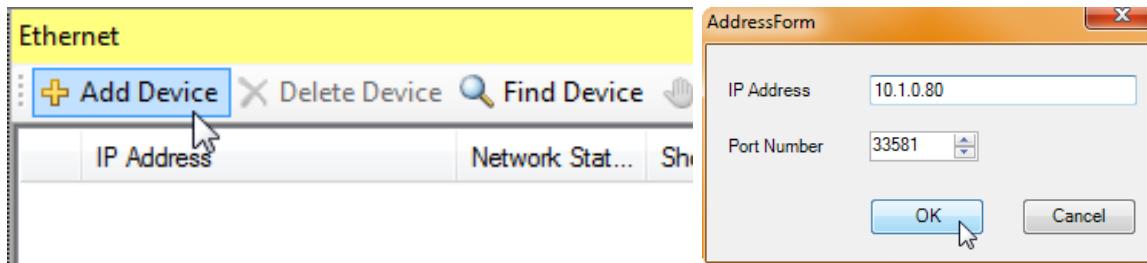


**NOTE: If the IP address is all zeros (0.0.0.0), check your ethernet cable connection for a loose connection.**

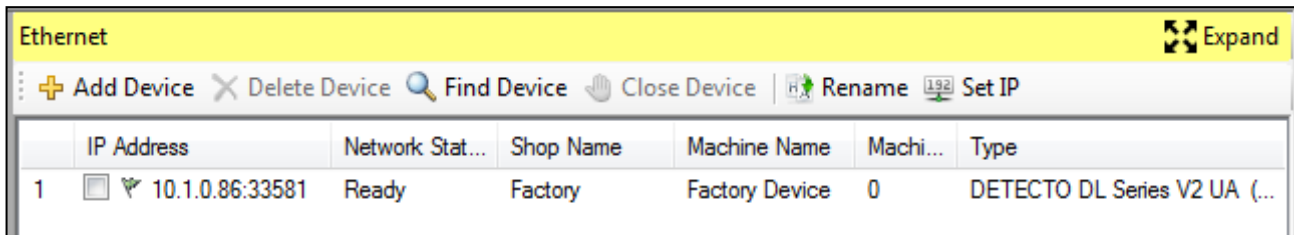
## CONNECTING TO THE SCALE, CONT.

### Adding the Scale to the DLX50 Software

1. Make sure the DL scale is turned off.
2. Open the DLX50 scale utility on the PC.
3. With the DLX50 scale utility at the Home screen, turn on the DL scale.
4. On the top right of the Home screen, you will see a yellow section labeled Ethernet.
5. Click on +Add Device. A window labeled AddressForm will open.



6. Enter the IP address you recorded earlier in the IP Address box.
7. Verify the port number is set to 33581, and then click OK.
8. The device should appear on the screen with the Network Status showing Ready.



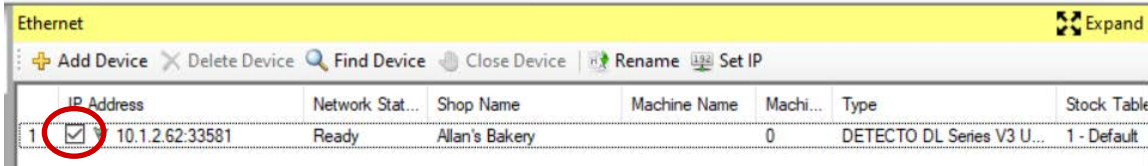
**NOTE: If the device does not appear, check your ethernet cable connection for a loose connection.**

# CONNECTING TO THE SCALE, CONT.

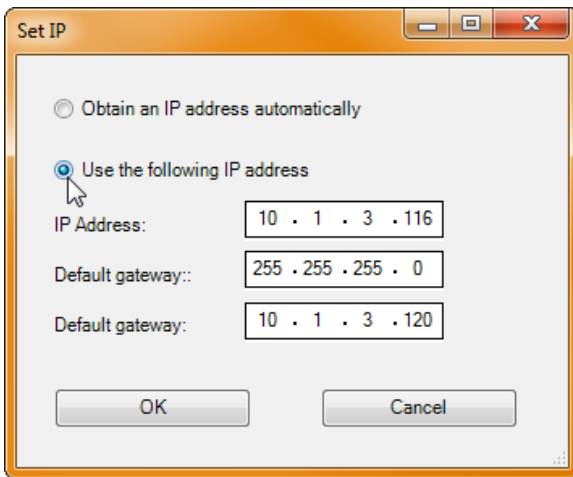
## Setting a Static IP Address for the Scale

If desired, a static IP address for the scale may be programmed from the DLX50 PC Utility.

1. Select the DL scale on the network to be changed and click Set IP.



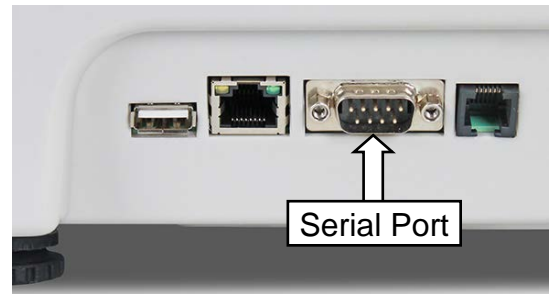
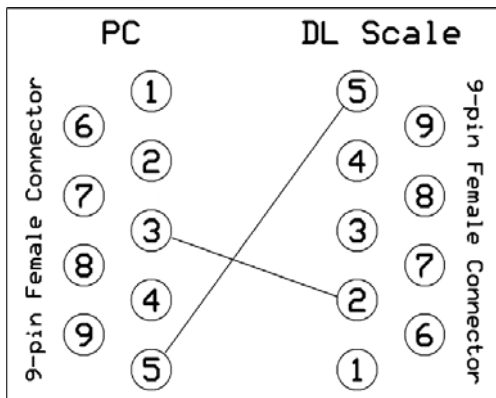
2. Select Use the following IP address, enter the desired network settings, and click OK. The selected scale has now been programmed with a static IP address.



## Establishing an RS-232 Serial Connection

The DL Series scale has an RS232 serial port that may be used to establish a connection to the PC.

To use the port, a connecting cable with two DB-9 serial connectors wired as shown in the diagram below is required.



The required cable can be purchased from the Cardinal/Detecto Parts Department at (800) 641-2045 or [parts@cardet.com](mailto:parts@cardet.com). The part number is 8545-B099-0A, DATA CABLE: 778/788 TO PC (RS232).

# RETRIEVING DATA FROM THE SCALE

Data can be retrieved from the scale for data backup, creating a duplicate setup on a different scale, or uploading data for editing and reloading. This can be done using a USB drive or over an Ethernet connection.

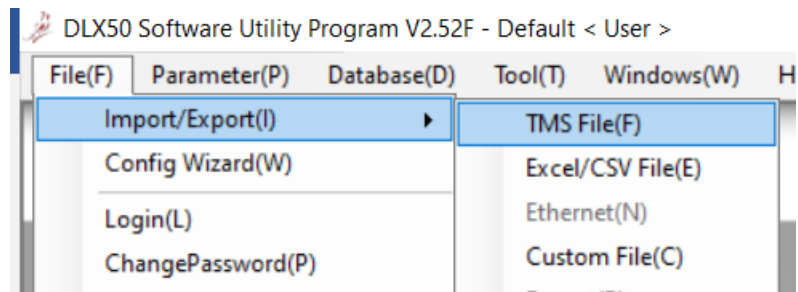
## Using a USB Drive

1. Insert the USB drive into scale.
2. With the scale in the normal operation mode, press the **Prog** key, the **4** key, and then press the **1** key.
3. Next, enter the three-digit file number that the file will be saved as (the number will show in the Total Price window), and then press the **Amend** key.
4. The Total Price window will change to show *UP - dAtA*, and the dot matrix window will show Upload Please Wait.
5. When the data has been saved to the USB drive, the Total Price window will change to show *Finish*, and the dot matrix window will show Upload Finish.
6. Remove the USB drive from the scale.



**NOTE:** The file will be saved on that USB drive under the folder “JHSCALE” with the file name “A\_XXX.TMS” (where xxx is the three-digit file number entered in the previous step). If inputting into the DLX50 software utility, proceed to step 5. If transferring to another scale, refer to the **TRANSFERRING DATA TO THE SCALE** section of this manual.

7. Insert the USB drive into the PC.
8. Click on the TMS File icon on the Home screen, or click on File(F), Import/Export(I), then select TMS File(F).



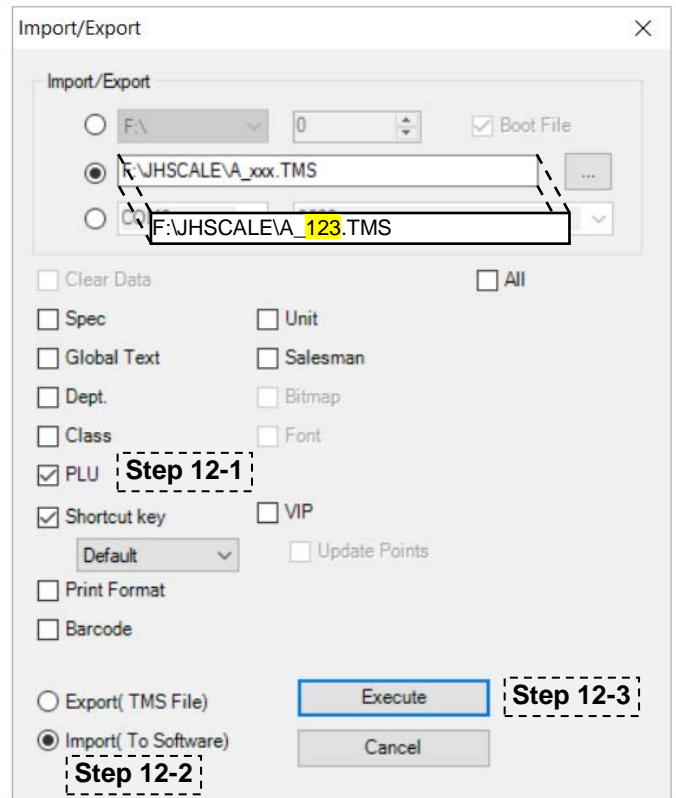
9. The DLX50 software utility will open an Import/Export window on the computer display.



# RETRIEVING DATA FROM THE SCALE, CONT.

## Using a USB Drive, Cont.

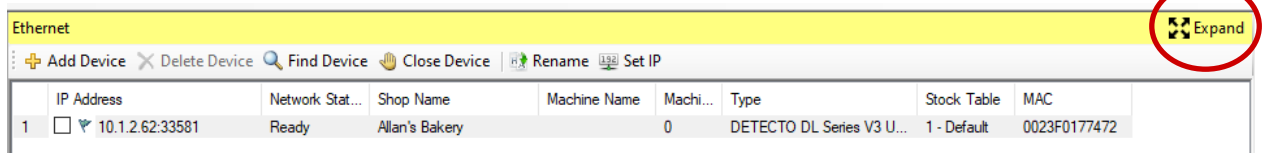
10. Select the middle Import/Export option box and verify the drive designation is correct (drive F:\ is shown in the example).
11. Change the “xxx” in the box to the three-digit file number that you entered previously in step 3. This will be the name the imported file will be saved as.
12. Next, perform the following steps:
  - <sup>1</sup> Verify the proper items are checked for importing.
  - <sup>2</sup> Make sure Import is selected.
  - <sup>3</sup> Click on the “Execute” button.
13. The DLX50 software utility will import the file from the USB drive.



# RETRIEVING DATA FROM THE SCALE, CONT.

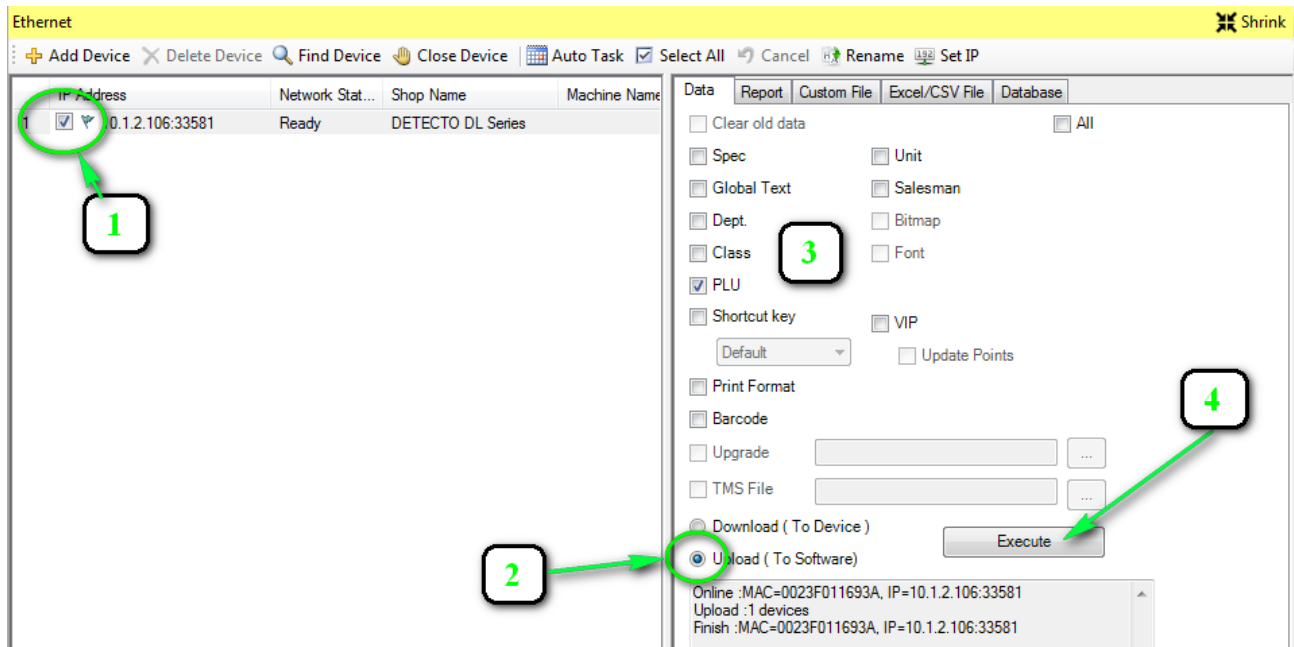
## Using Ethernet

1. On the Home screen, click on the Expand icon in the Ethernet window. The Ethernet window will enlarge almost filling the computer display.



2. In the Ethernet window, perform the following steps:

- 1 Select the scale from which to retrieve the data.
- 2 Select Upload.
- 3 Verify and select which parameters are to be retrieved.
- 4 Click Execute.



3. All selected parameters are now available to be viewed and edited within the DLX50 PC Utility.

# TRANSFERRING DATA TO THE SCALE

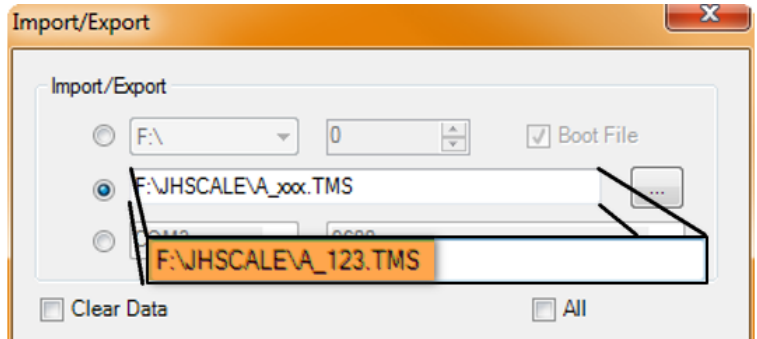
## Using a USB Drive

**NOTE:** If the TMS file is already on the USB drive, skip to step 6.

1. Insert the USB drive into the PC.
2. Click one of the TMS File buttons.



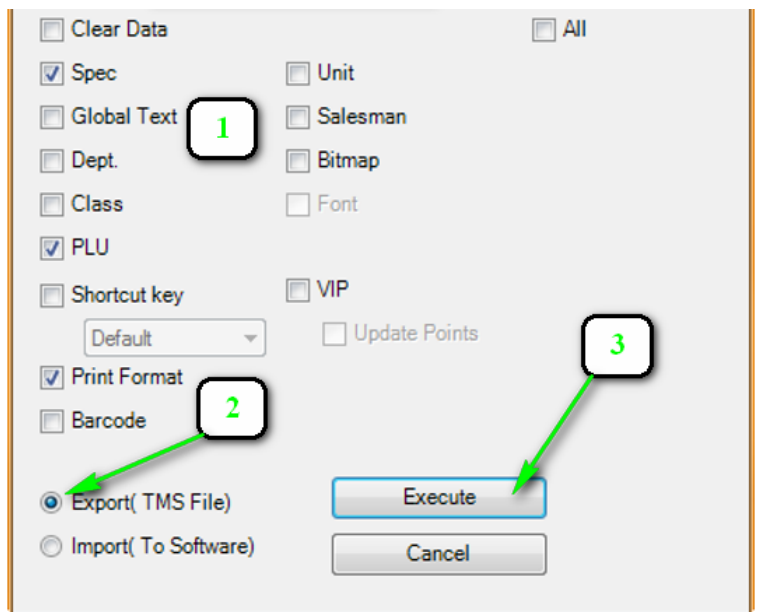
3. Select the middle Import/Export option and verify the drive designation is correct (F drive shown). Change the xxx in the box to the three-digit file number that the file will be saved as.



4. Next, perform the following steps:
  - 1 Verify the proper items are checked for exporting.
  - 2 Be sure Export is selected.
  - 3 Click Execute.

The file is now saved to the USB drive under folder JHSCALE and as the file name specified when exporting.

5. Remove the USB drive from the PC.
6. Install the USB drive into the DL Scale USB port.
7. Press the **Prog** key, the **4** key, and the **1** key, and then enter the file number to be downloaded into the scale (the number will be displayed in the Total Price window of the DL Scale).
8. Press the **Accu/Confirm** key.
9. When the dot matrix screen reads Download Finish, press **Sale** to return to the normal weighing mode and remove the USB drive from the scale.



# TRANSFERRING DATA TO THE SCALE, CONT.

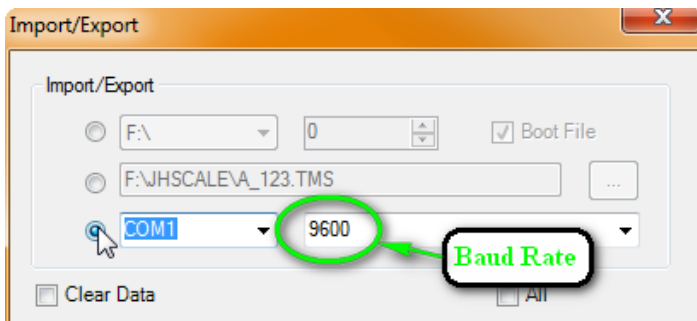
## Using an RS-232 Serial Connection

On the DL Scale, press the **Prog** key, the **4** key, and the **3** key. The scale display will say "Download Please Wait." It is ready to receive information from the DLX50 Utility.

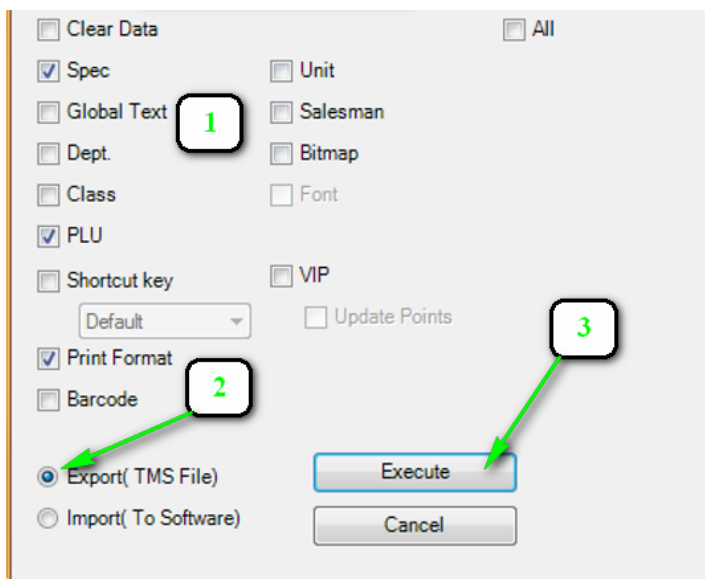
1. Step 2: From the PC utility, click one of the TMS File buttons.



2. Select the bottom button for RS232 communication and verify the COM port number and baud rate are correct.



3. Next, perform the following steps:
  - 1 Verify the proper items are checked for exporting.
  - 2 Be sure Export is selected.
  - 3 Click Execute.

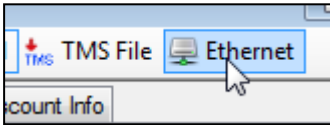


4. When the dot matrix screen reads "Download Finish", press **Sale** to return to the normal weighing mode.

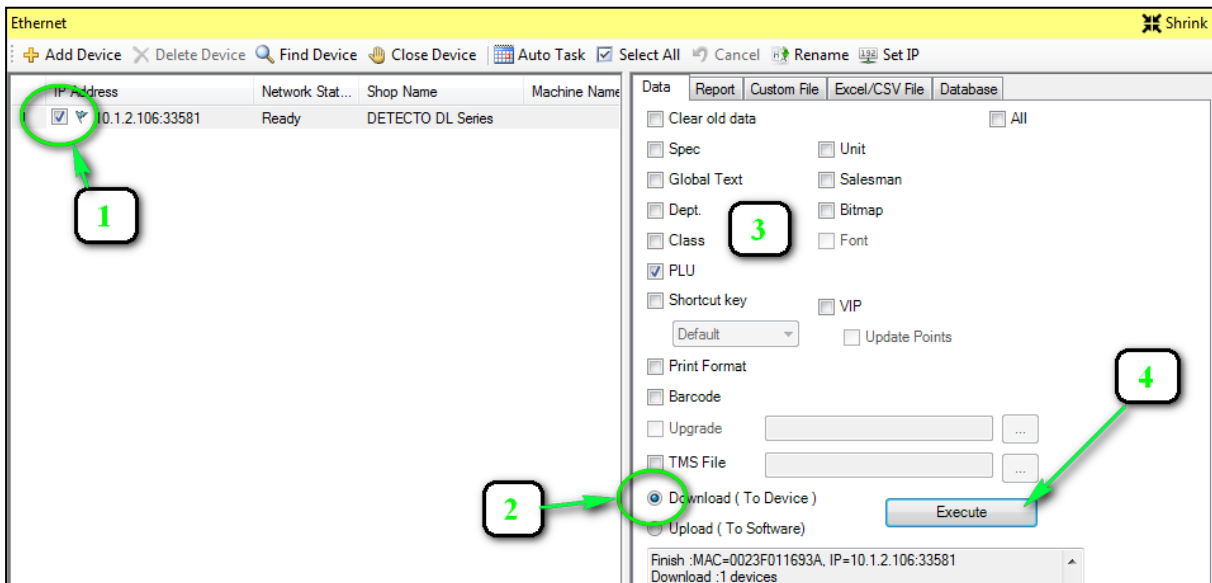
# TRANSFERRING DATA TO THE SCALE, CONT.

## Using Ethernet

1. From either the PLU, Print Format, Barcode, Spec, Global Text, or Shortcut Key screens click on the Ethernet icon.



2. In the Ethernet window, perform the following steps:
  - 1 Select the scale to transfer the data to.
  - 2 Select Download.
  - 3 Verify and select which parameters are to be loaded.
  - 4 Click Execute.



3. All transferred information is now part of the settings of the DL Scale.

# PRICE LOOK-UP (PLU) NUMBERS

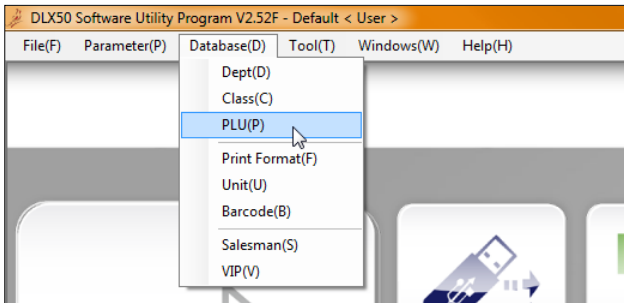
## Description of Most Commonly Used PLU Settings

Number	Numeric designation for the PLU
Import/Export	Selection if the PLU is to be imported/exported with other PLUs
Name	Name of the product the PLU represents
Item Code	Can be different than the PLU number. Item Code is used for the first part of the default barcode
Unit	Weighing unit. For best results, set to either "6 - lb" (weighed items) or "2 - pcs" (counted items)
U. Price	Price per the unit designated in the previous setting
Tare	Container or other tare weight associated with weighing the PLU
Print Format	(Print Info tab) Numeric selection of print format. <u>Only</u> change if using a custom print format
Barcode Format	(Print Info tab) Numeric selection of barcode format, only used if using custom barcode format
Text 1	Information for the text box. <b>NOTE:</b> Requires P/N 6600-3002 (CAS 8020) label or a custom label
Print Package Date	Date the label was printed
Print Shelf Date	The last date product should be on the "shelf". This is the Package Date plus Shelf Days
Shelf Days	Number of days the product is to remain on the "shelf" available for sale

# PRICE LOOK-UP (PLU) NUMBERS, CONT.

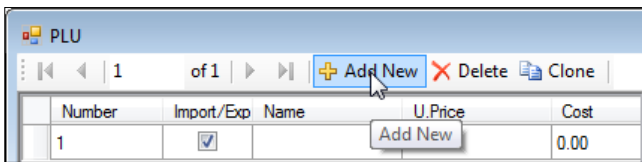
## Creating and Editing a PLU

1. Click Database(D), PLU(P).

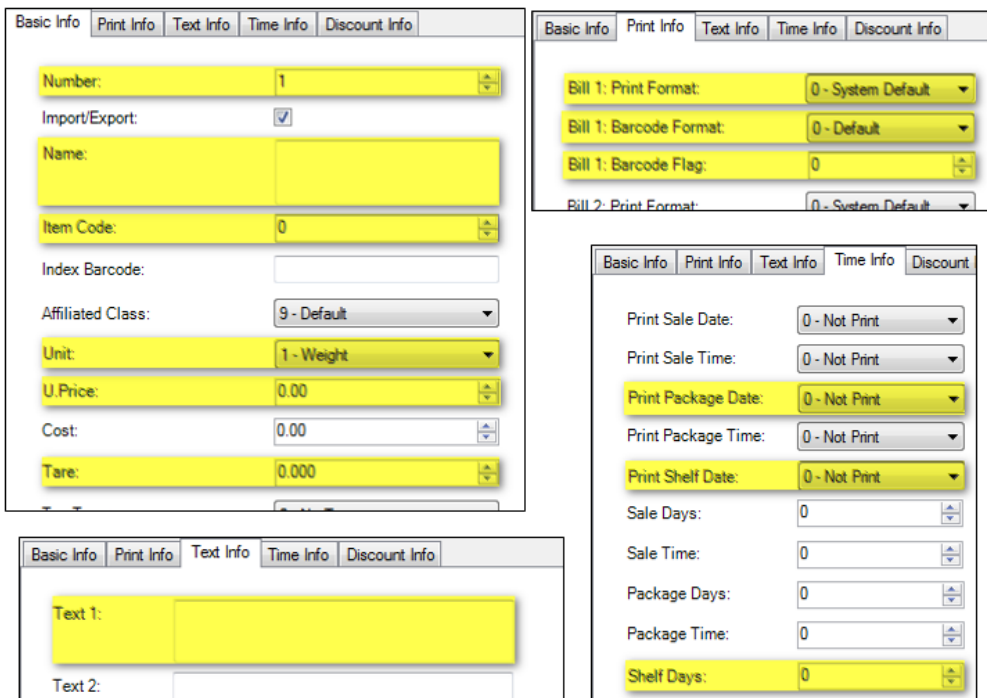


**NOTE:** If any PLUs have been created and/or imported into the software, a list of them will be on the left of the window that opens. To edit a PLU, skip step 2.

2. To create a new PLU, click Add New. This will create a PLU with an automatically assigned number.



3. Click the PLU to enter/edit information. The information for the PLU is displayed and edited in the right half of the window. The most common applicable settings the DL scale uses for the PLUs are highlighted below.



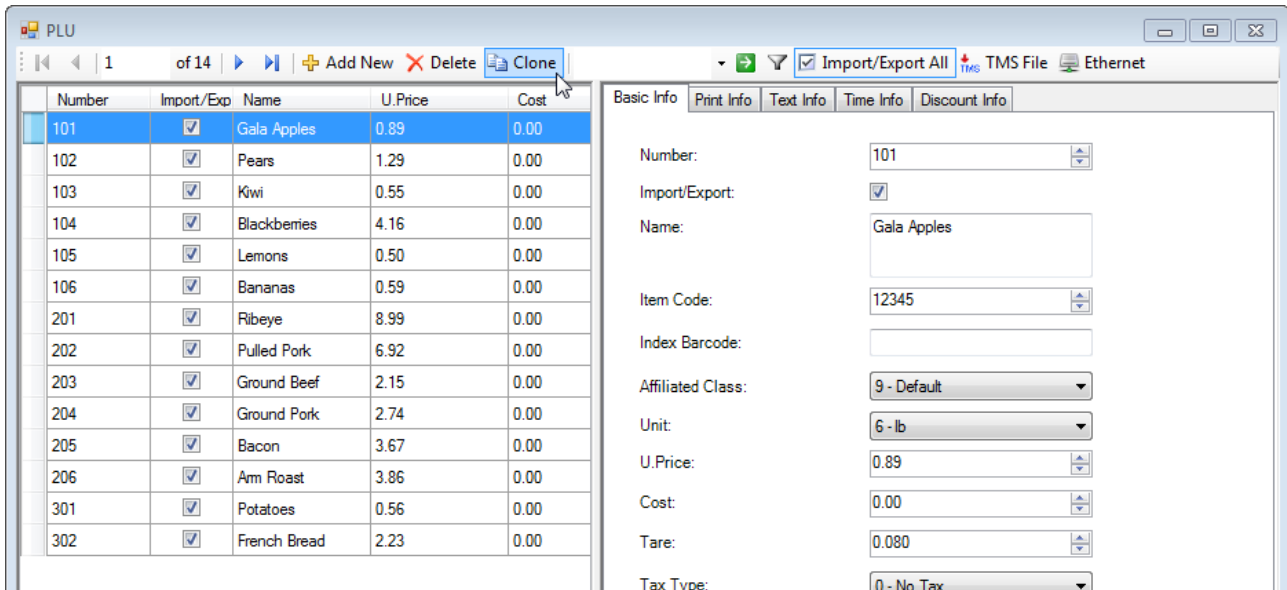
4. Once these settings are changed, they are ready to be exported. For instructions to transfer data, refer to the **TRANSFERRING DATA TO THE SCALE** section of this manual.

# PRICE LOOK-UP (PLU) NUMBERS, CONT.

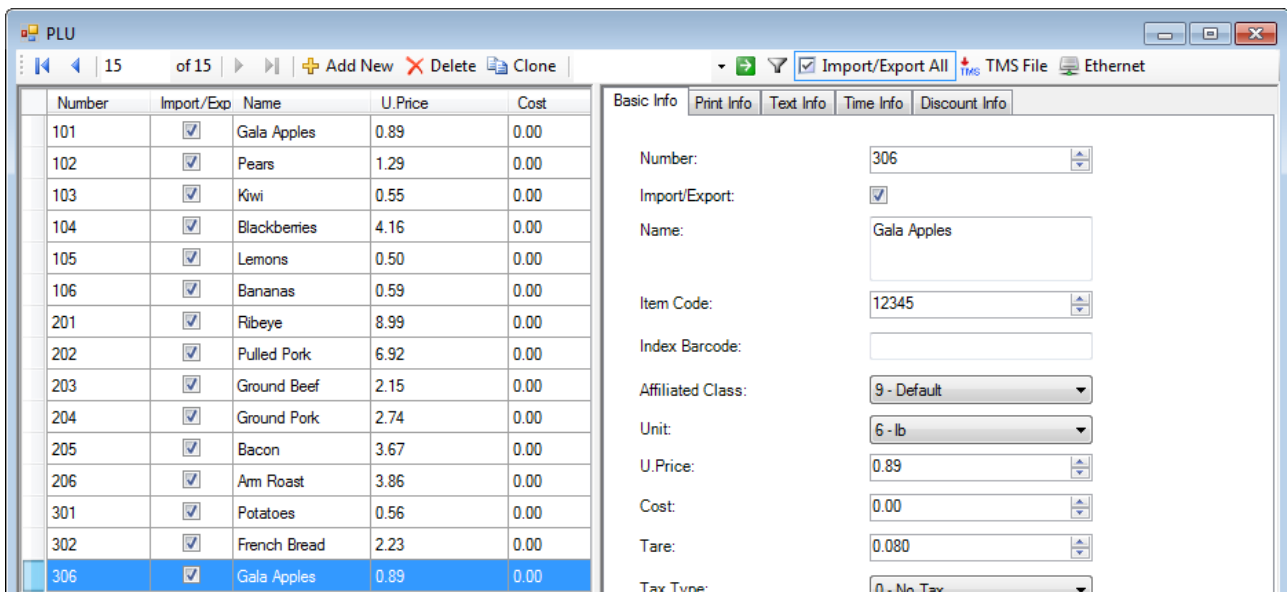
## Cloning PLUs

In an instance where a new PLU will have similar settings to an existing PLU, it may be faster and easier to clone an existing PLU than to create a new PLU. For example, if 2 items have the same unit, tare weight, custom print and barcode formats, and the same number of shelf days, cloning allows these settings to already be populated in the new PLU.

1. Select the PLU that will be cloned. Make this selection based on the number of similarities between that PLU and the new one. In this case, we will be cloning Gala Apples to create a PLU for Fuji Apples.
2. Click Clone.



3. This will create a duplicate of the selected PLU and automatically assign it a new PLU.

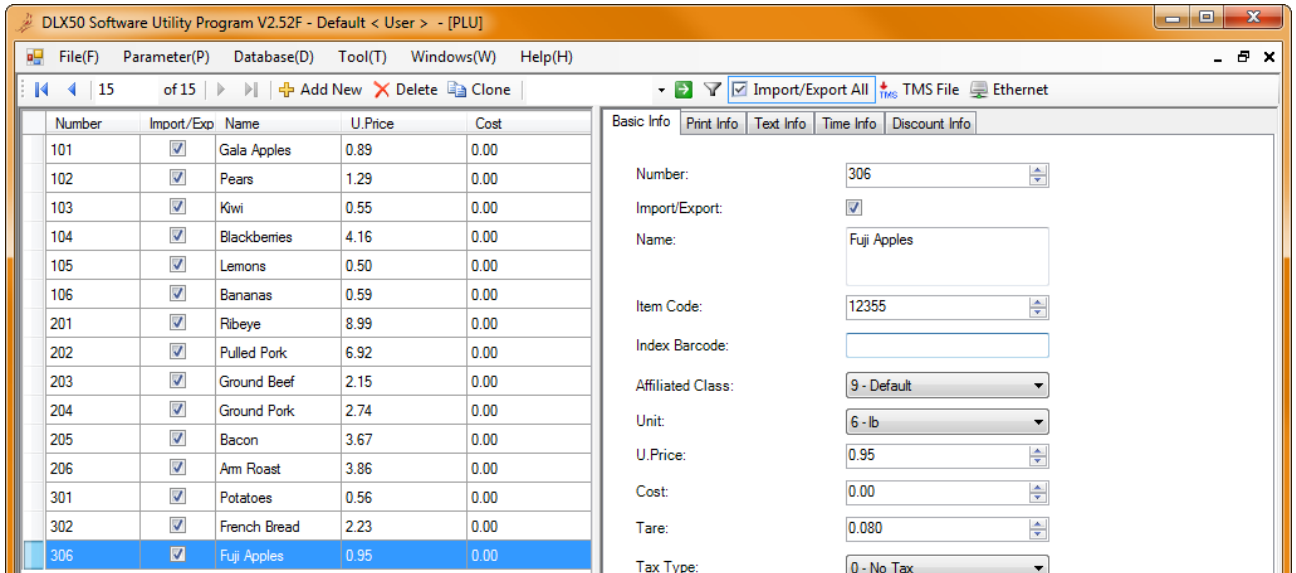




# PRICE LOOK-UP (PLU) NUMBERS, CONT.

## Cloning PLUs, Cont.

4. Make the necessary changes. In the example, only a few values need to be changed instead of every value needing to be created from a new blank PLU.

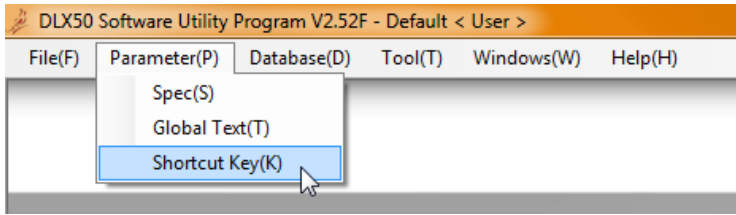


5. Once these settings are changed, they are ready to be exported. For instructions to transfer data, refer to the **TRANSFERRING DATA TO THE SCALE** section of this manual.

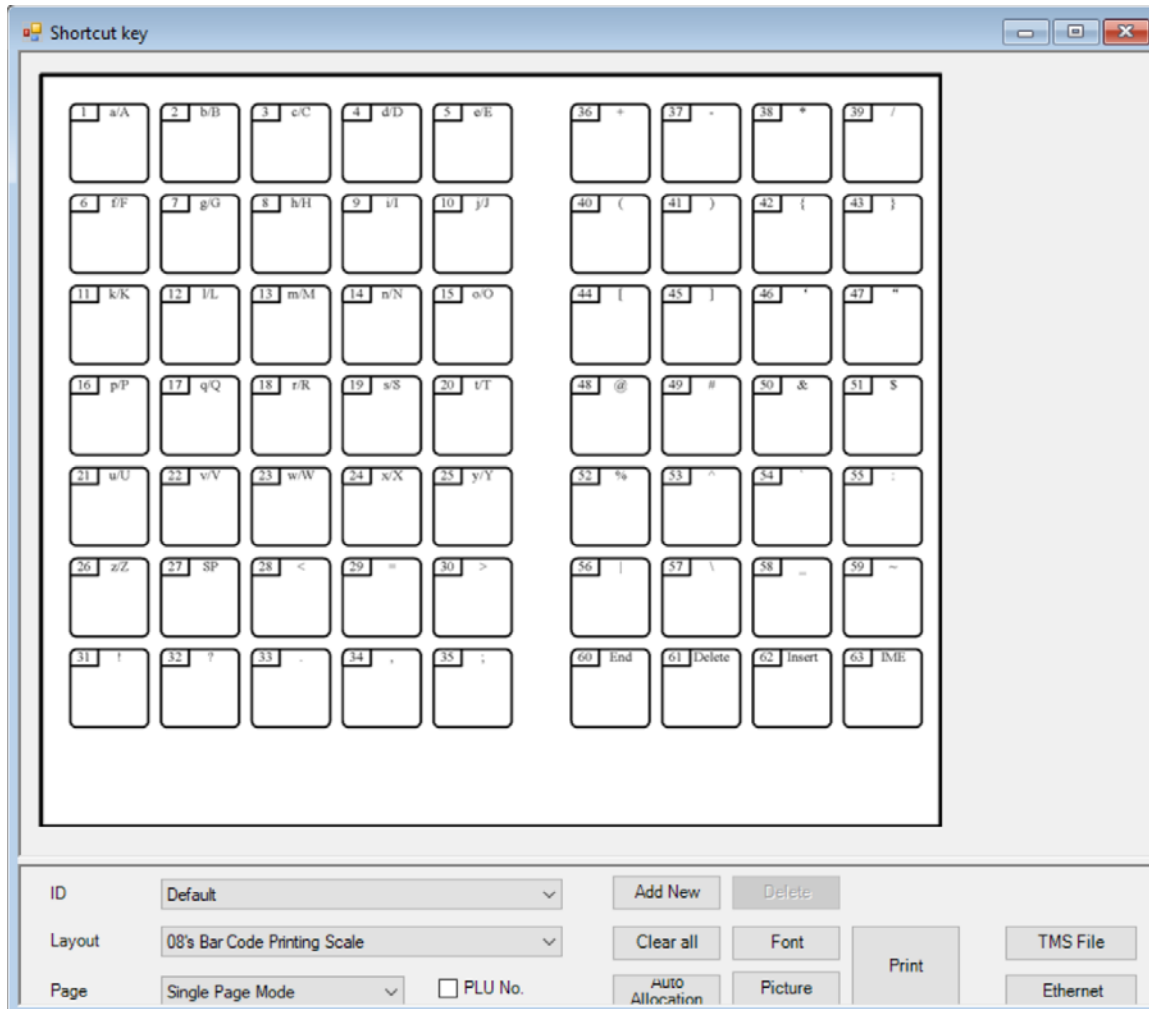
# PRICE LOOK-UP (PLU) NUMBERS, CONT.

## Assigning PLUs to Quick Keys

1. Click Parameters(P), Shortcut Key(K) from the menu bar.



2. This will bring up a window with a graphic display of the PLU keys.



3. Set up the necessary shortcut key parameters.

a. For Layout, one of the “12’s Bar Code Printing Scale” options will be used. Select between the (Pole) or (No Pole) version depending on which scale you have.

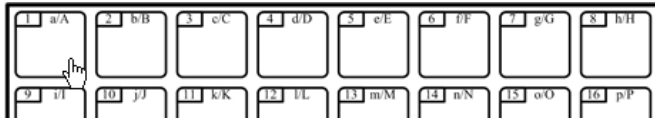
b. Also, determine if one or two PLUs will be utilized per key.

**NOTE:** The second PLU is accessed during operation by pressing Shift and then the appropriate PLU key.

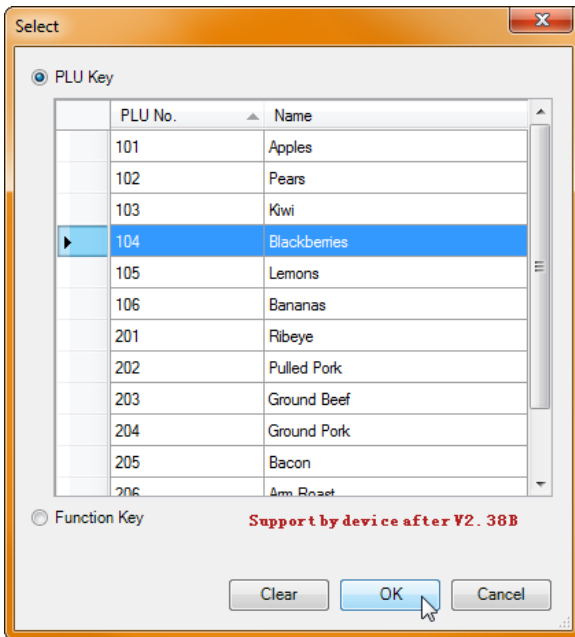
# PRICE LOOK-UP (PLU) NUMBERS, CONT.

## Assigning PLUs to Quick Keys, Cont.

4. Select the shortcut key to be assigned.

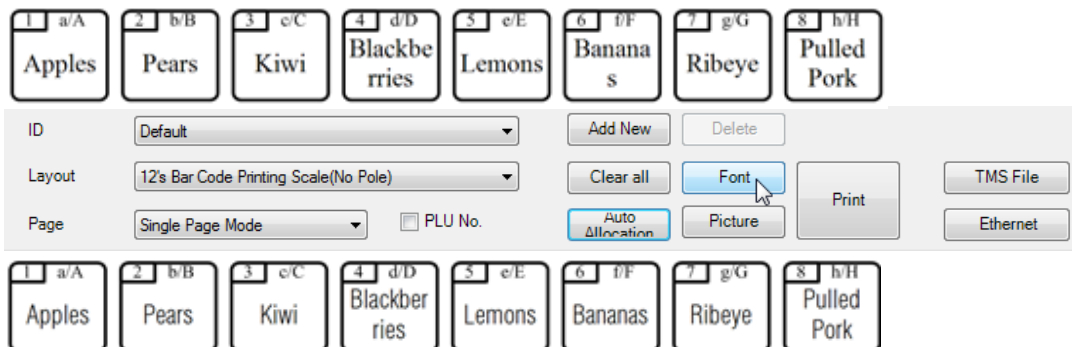


5. Select the PLU number to be assigned to the shortcut key and click OK.



6. The PLU is now assigned to the shortcut key. When all of the required shortcut keys are assigned, they can be exported to the scale. For instructions to transfer data, refer to the **TRANSFERRING DATA TO THE SCALE** section of this manual.

7. If required, the font style and size can be changed by clicking the Font button.



8. Once these keys are assigned, they are ready to be exported. For instructions to transfer data, refer to the **TRANSFERRING DATA TO THE SCALE** section of this manual.

9. To print this sheet, click Print and the layout will be sent to the printer where it can be cut out and slipped into the overlay slot over the shortcut keys.

# SCALE PARAMETERS

## Spec Parameters



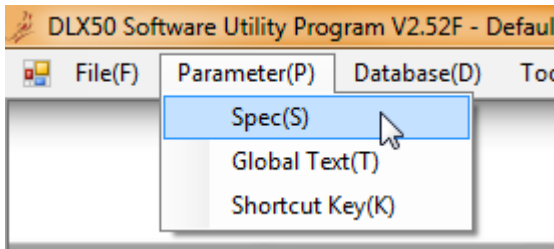
**IMPORTANT!** Use caution when changing spec parameters. If a setting is unintentionally changed it could greatly affect the operation of the scale, make it exceedingly difficult to diagnose the error, and could require the scale to be restored to factory defaults. Any parameter the user is not confidently familiar with should not be changed.

The Spec Parameters contain settings that do various things. For example, the Ethernet IP addresses can be changed, print formats can be set, and barcode information can be modified (among other things).

### Example of Changing a Spec Parameter

For an example of changing a Spec Parameter, the following steps will demonstrate how to change the baud rate of the RS232 port for the scale.

1. From the menu bar, click Parameter(P), Spec(S).



2. The Spec Parameter screen will open.

Number	Description	Value	Import/Exp
0	Bill 1: Item Print Format(0~99)	1	<input type="checkbox"/>
1	Bill 1: Item Barcode Format(0~99)	2	<input type="checkbox"/>
2	Bill 1: Item Barcode Flag(0~99999)	20	<input type="checkbox"/>
3	Bill 1: Item Print Times(0~99)	1	<input type="checkbox"/>
4	Bill 1: Item Print Reversed	0:Normal	<input type="checkbox"/>
5	Bill 1: Sum Print Format(0~99)	4	<input type="checkbox"/>
6	Bill 1: Sum Barcode Format(0~99)	7	<input type="checkbox"/>
7	Bill 1: Sum Barcode Flag(0~99999)	2099999	<input type="checkbox"/>
8	Bill 1: Sum Item Print Times(0~99)	1	<input type="checkbox"/>
9	Bill 1: Sum Print Reversed	0:Normal	<input type="checkbox"/>
10	Bill 2: Item Print Format(0~99)	0	<input type="checkbox"/>
11	Bill 2: Item Barcode Format(0~99)	0	<input type="checkbox"/>
12	Bill 2: Item Barcode Flag(0~99999)	0	<input type="checkbox"/>
13	Bill 2: Item Print Times(0~99)	0	<input type="checkbox"/>
14	Bill 2: Item Print Reversed	0:Normal	<input type="checkbox"/>
15	Bill 2: Sum Print Format(0~99)	0	<input type="checkbox"/>
16	Bill 2: Sum Barcode Format(0~99)	0	<input type="checkbox"/>

# SCALE PARAMETERS

## Spec Parameters, Cont.

### Example of Changing a Spec Parameter, Cont.

3. Scroll down to the RS232 Baud Rate parameter (Number 41).

Number	Description	Value	Import/Exp
40	Device Number(0~9999999)	0	<input type="checkbox"/>
41	RS232 Baud Rate	5:9600	<input type="checkbox"/>
42	USB-Disk Auto Update	1:Auto Update	<input type="checkbox"/>

4. Check the box in the Import/Export column and select the proper baud rate.

41	RS232 Baud Rate	5:9600	<input checked="" type="checkbox"/>
42	USB-Disk Auto Update	0:300	<input type="checkbox"/>
43	Ethernet Connect	1:600	<input type="checkbox"/>
44	Ethernet Auto Re-connect(0~65535)	2:1200	<input type="checkbox"/>
45	Ethernet Auto Reboot if Configure Changed	3:2400	<input type="checkbox"/>
46	Latency Time of USB Linking(0~99,Each 10 for 1s,0 for Default)	4:4800	<input type="checkbox"/>
47	USB Power Always ON	5:9600	<input type="checkbox"/>
		6:19200	<input type="checkbox"/>
		7:38400	<input type="checkbox"/>
		8:57600	<input type="checkbox"/>
		9:115200	<input type="checkbox"/>

5. Once these settings are changed, they are ready to be exported. For instructions to transfer data, refer to the **TRANSFERRING DATA TO THE SCALE** section of this manual.



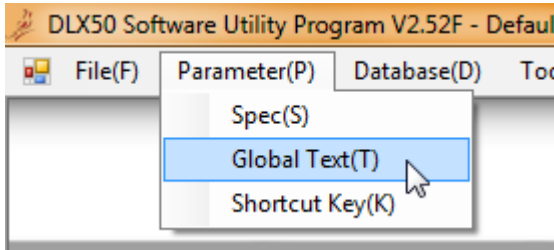
**NOTE: Only the Spec Parameters with the Import/Export box checked will be exported.**

# SCALE PARAMETERS, CONT.

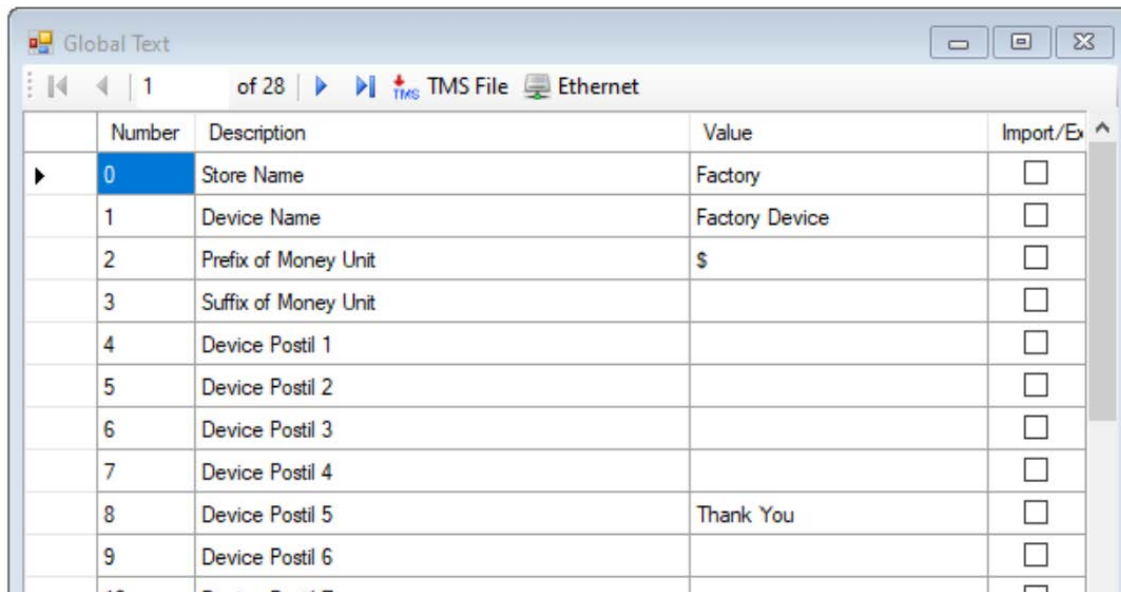
## Global Text Parameters

Most of the Global Text Parameters are settings that will commonly apply universally to all labels. Examples are the Store Name, Device Name, and several of the custom text options.

1. From the menu bar, click Parameter(P), Global Text(T).

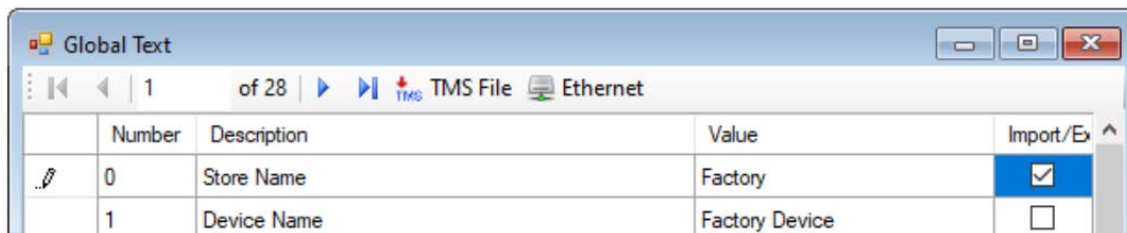


2. The Global Text screen will open.



Number	Description	Value	Import/Export
0	Store Name	Factory	<input type="checkbox"/>
1	Device Name	Factory Device	<input type="checkbox"/>
2	Prefix of Money Unit	\$	<input type="checkbox"/>
3	Suffix of Money Unit		<input type="checkbox"/>
4	Device Postil 1		<input type="checkbox"/>
5	Device Postil 2		<input type="checkbox"/>
6	Device Postil 3		<input type="checkbox"/>
7	Device Postil 4		<input type="checkbox"/>
8	Device Postil 5	Thank You	<input type="checkbox"/>
9	Device Postil 6		<input type="checkbox"/>

6. Scroll down to the Description to change.



Number	Description	Value	Import/Export
0	Store Name	Factory	<input checked="" type="checkbox"/>
1	Device Name	Factory Device	<input type="checkbox"/>

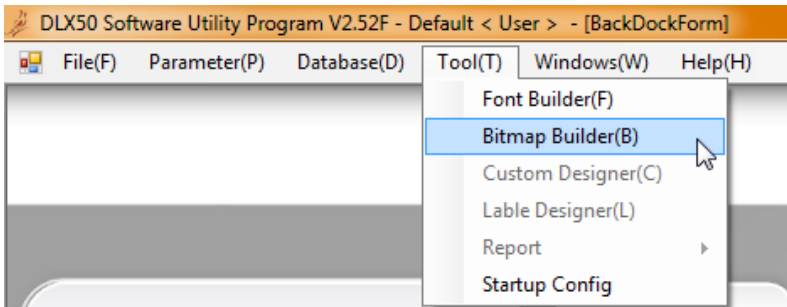
7. Check the box in the Import/Export column.
8. Select the text in the Value column and enter the desired text.
9. Once these settings are changed, they are ready to be exported. For instructions to transfer data, refer to the **TRANSFERRING DATA TO THE SCALE** section of this manual.

# SCALE PARAMETERS, CONT.

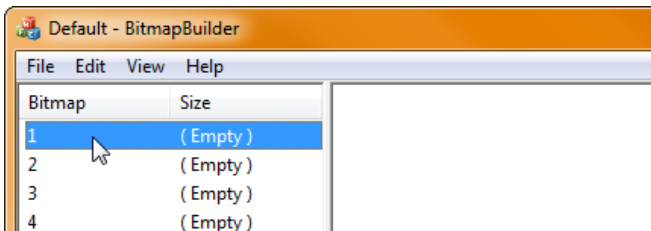
## Bitmap Builder

This application within the DLX50 PC Utility is used to import and store custom graphics that are in a black and white bitmap format.

1. From the menu bar, click Tool(T), Bitmap Builder(B).



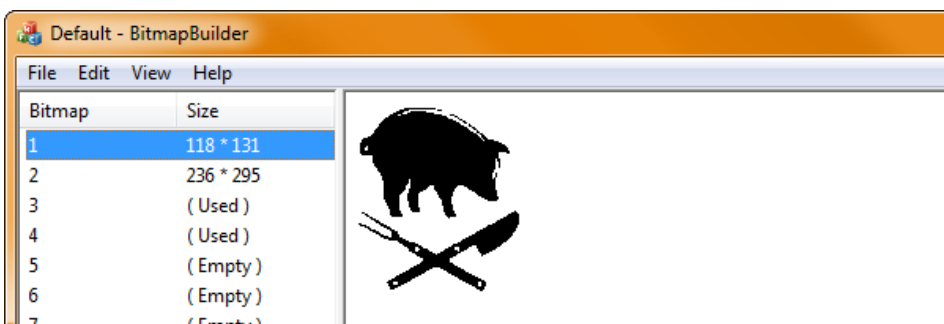
2. A list of bitmap images and corresponding file sizes will be shown on the left of the Bitmap Builder window.
3. To insert a bitmap image, double-click the number to assign the bitmap to.



4. This will bring up a window to browse for the applicable bitmap image.
5. Select the file and click Open. This will populate the bitmap number with the image which is displayed in the right portion of the window.

**NOTE:** If the new image brought into the Bitmap Builder is relatively large, one or more of the bitmap storage slots might say “(Used)” in the size column. This indicates that the image took up more memory than allocated for an image and is using the memory of multiple slots.

6. When finished, click the X in the upper right of the window and select YES on the popup window.

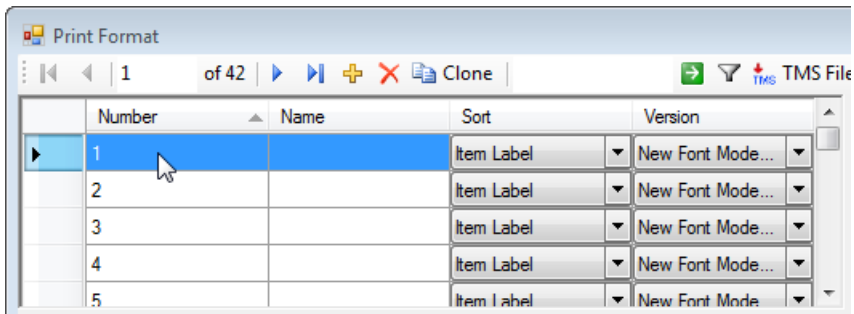


# SCALE PARAMETERS, CONT.

## Custom Print Formatting

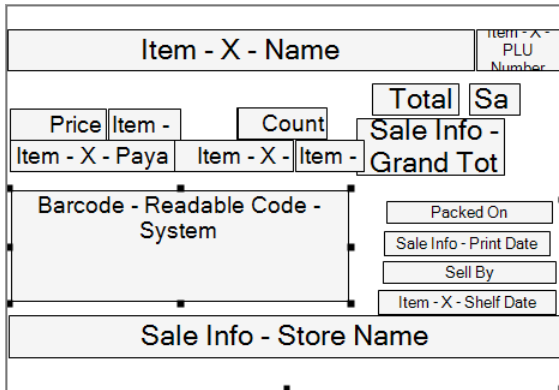
The print formats for the DL Scales are very customizable. It would be difficult to show all of the capabilities of this print formatting utility in detail, so an overview will be given here through an example of modifying the standard default label to include a graphic instead.

1. Import Print Format parameters from the scale. Refer to the “Retrieving Data from the Scale” section of this manual for this procedure.
2. Print format #1 is the default layout that prints on the standard blank label that comes with the DL Scale. Select 1 from the upper left.

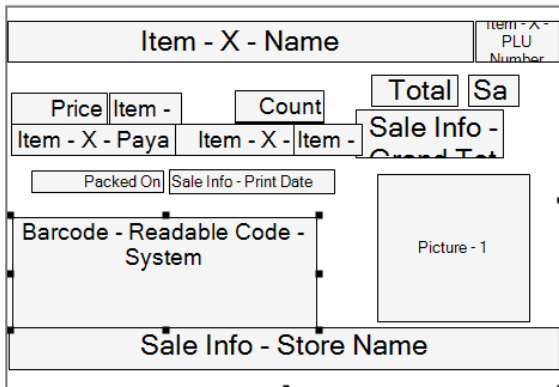


3. This brings up a graphic representation of the label layout for label format 1.
4. Below is this representation of the before and after labels as well as their actual printing.

### Before:



### After:





## SCALE PARAMETERS, CONT.

The table below lists the items that were changed on the example label along with the Function and Procedure used to modify the label.

ITEM	CHANGE	FUNCTION	PROCEDURE
"Sell By" text and Shelf Date	Deleted	Delete an item	Click on the item box, press Delete on the keyboard, OR select from the list to the left of the graphic (under the Previous button) and click the red X above the list.
"Packed On" text and Print Date	Moved	Move an item location	Click and drag the item box to the desired location.
Pricing information, PLU, and Item Name	Moved a group of items	Move the location of multiple items	While holding the shift key, click multiple boxes to select multiple items. Click and drag one of the item boxes to move the entire group.
Barcode	Narrowed	Adjust the size of the item box	Click on the item box, then click and drag the black squares on the surrounding lines to adjust the height and width.
"Packed On" text and Print Date	Text right-justified; date left-justified	Change item text location	Click on the item box to select, then click on Snap: (lower left of graphic) to change the text to the desired location within the item box. For example: selecting Middle Right will put the text on the right side and middle of the item box.
Picture	Inserted	Add a new item	<p>Click on the yellow "+" (above the item list and under the Previous button).</p> <p>Click and drag the new item box to the desired location on the label and then adjust the size to fit the location on the label.</p> <p>Double-click on the new item box, then click on the down arrow of the top box to choose the item type (Picture in this example) from the drop-down list.</p> <p>Click on the down arrow of the middle box and choose an option from the drop-down list. For item type Picture, choose the bitmap image number.</p>

# STATEMENT OF LIMITED WARRANTY

DETECTO warrants its equipment to be free from defects in material and workmanship as follows: DETECTO warrants to the original purchaser only that it will repair or replace any part of equipment which is defective in material or workmanship for a period of **two (2) years from date of shipment**. Detecto shall be the sole judge of what constitutes a defect.

During the **first ninety (90) days** DETECTO may choose to replace the product at no charge to the buyer upon inspection of the returned item.

**After the first ninety (90) days**, upon inspection of the returned item, DETECTO will repair or replace it with a remanufactured product. The customer is responsible for paying for the freight both ways.

This warranty does not apply to peripheral equipment not manufactured by DETECTO; this equipment will be covered by certain manufacturer's warranty only.

This warranty does not include replacement of expendable or consumable parts. This does not apply to any item which has deteriorated or damaged due to wear, accident, misuse, abuse, improper line voltage, overloading, theft, lightning, fire, water or acts of God, or due to extended storage or exposure while in purchaser's possession. This warranty does not apply to maintenance service. Purchased parts will have a ninety (90) day repair or replacement warranty only.

DETECTO may require the product to be returned to the factory; item(s) must be properly packed and shipping charges prepaid. A return authorization number must be obtained for all returns and marked on the outside of all returned packages. DETECTO accepts no responsibility for items lost or damaged in transit.

## Conditions Which Void Limited Warranty

This warranty shall not apply to equipment which:

- A.) Has been tampered with, defaced, mishandled or has had repairs and modifications not authorized by DETECTO.
- B.) Has had serial number altered, defaced, or removed.
- C.) Has not been properly grounded according to Detecto's recommended procedure.

## Freight Carrier Damage

Claims for equipment damaged in transit must be referred to the freight carrier in accordance with freight carrier regulations.

This warranty sets forth the extent of our liability for breach of any warranty or deficiency in connection with the sale or use of the product. DETECTO will not be liable for consequential damages of any nature, including but not limited to, loss of profit, delays or expenses, whether based on tort or contract. Detecto reserves the right to incorporate improvements in material and design without notice and is not obligated to incorporate improvements in equipment previously manufactured.

The foregoing is in lieu of all other warranties, express or implied including any warranty that extends beyond the description of the product including any warranty of merchantability or fitness for a particular purpose. This warranty covers only those DETECTO products installed in the forty-eight (48) contiguous continental United States.



Ph. (800) 641-2008  
E-mail: [detecto@cardet.com](mailto:detecto@cardet.com)  
102 E. Daugherty  
Webb City, MO 64870

04/22/2024  
Printed in USA  
D268-WARRANTY-DET-B





*DETECTO*

*102 E. Daugherty, Webb City, MO 64870 USA*

*Ph: 417-673-4631 or 1-800-641-2008*

*Fax: 417-673-2153*

*[www.Detecto.com](http://www.Detecto.com)*

*Technical Support: 1-866-254-8261*

*E-mail: [tech@cardet.com](mailto:tech@cardet.com)*