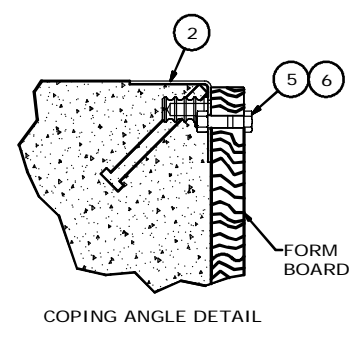
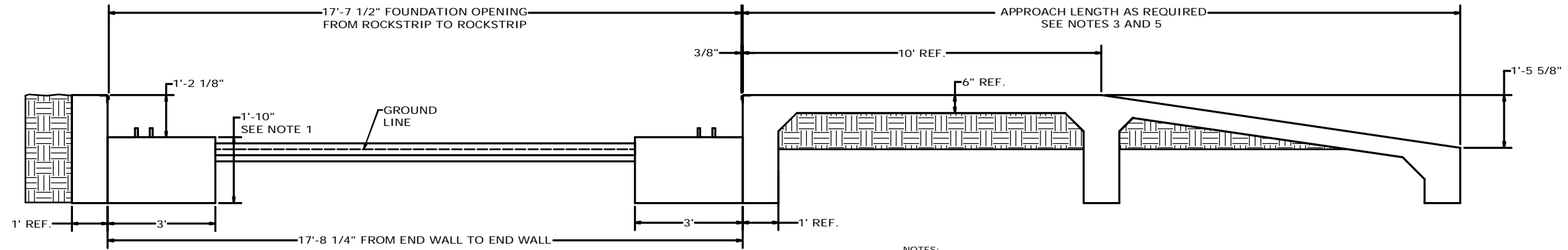
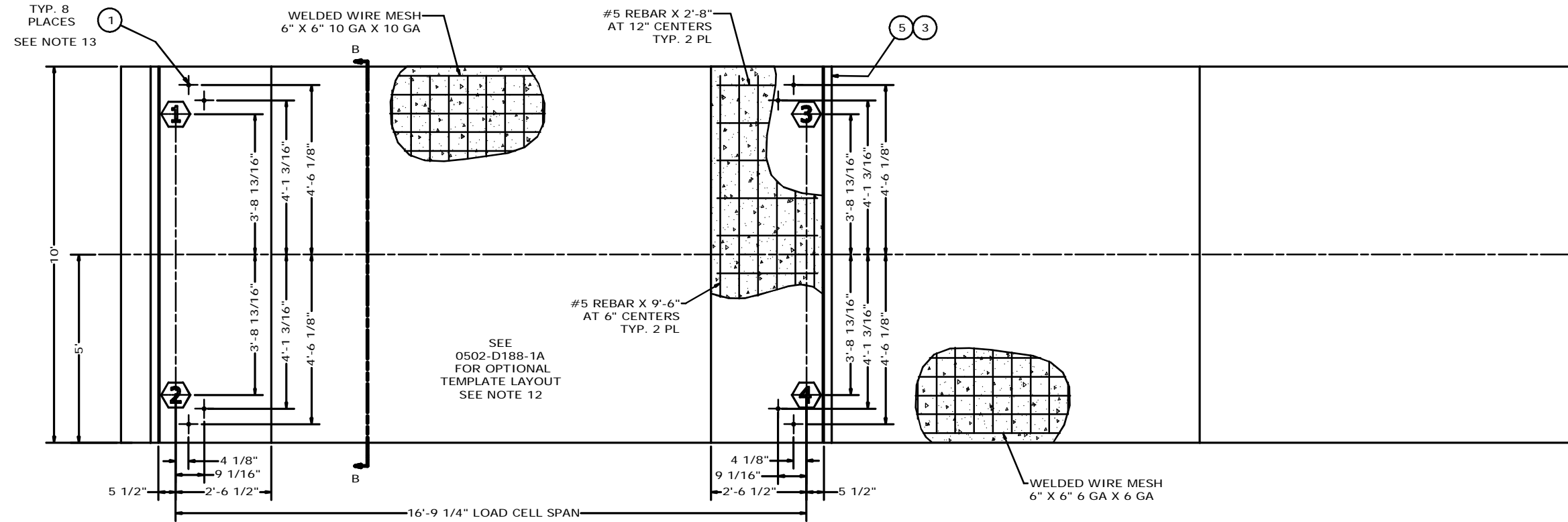
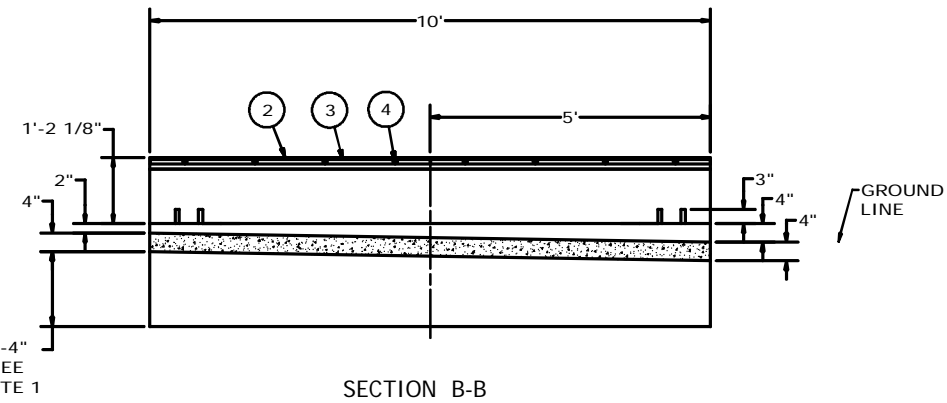


# FOR REFERENCE ONLY

REVISION HISTORY			
LTR	DESCRIPTION	DATE	BY
A	RELEASE FOR PRODUCTION	10/23/12	26107 ADB
B	CANCELED ECO 26107. RELEASED ON THIS ECO 26597 MOVED THE ANCHOR BOLT LOCATIONS CHANGED THE ANCHOR BOLT SIZE ADDED NOTE 13 ABOUT USING EPOXY CHANGED APPROACH TO PIER HEIGHT TO 1'-2 1/8"	10/3/13	26597 ADB



- NOTES:**
1. THE SCALE FOUNDATION AS SHOWN IS SUFFICIENT FOR FIRM SOIL AND GOOD CONCRETE. THE MINIMUM SOIL BEARING SHALL BE 3,000 POUNDS PER SQUARE FOOT AND THE MINIMUM CONCRETE STRENGTH SHALL BE 3,000 POUNDS PER SQUARE INCH AT 28 DAYS. FOR UNUSUAL SOIL CONDITIONS OR DEEP FROST PENETRATION, ALTER THE FOUNDATION AS REQUIRED. THE FOOTING SHALL BE BELOW THE FROST LINE.
  2. CARDINAL SCALE MFG. CO. SHALL NOT BE RESPONSIBLE FOR THE STABILITY OF THE FOUNDATION.
  3. THE FOUNDATION CONTRACTOR SHALL CONTACT THE STATE WEIGHT AND MEASURES DIVISION FOR STATE FOUNDATION REQUIREMENTS.
  4. WORK FROM THE CENTERLINES WHEN ERECTING FORMS AND SETTING BOLTS.
  5. APPROACH / APPROACHES MAY VARY BASED ON STATE REQUIREMENTS WHERE INSTALLED. VERIFY STATE REQUIREMENTS BEFORE CONSTRUCTION.
  6. APPROXIMATE EXCAVATION AND CONCRETE REQUIRED  
FOR SCALE FOUNDATION AS SHOWN:  
MAIN PIERS: 4.5 CU. YDS. EXCAVATION; 6.3 CU. YDS. CONCRETE  
SLAB FLOOR: 1.1 CU. YDS. EXCAVATION; 1.5 CU. YDS. CONCRETE  
APPROACH AS SHOWN (10'-0"): 2.9 CU. YDS. FILL; 1.7 CU. YDS. CONCRETE
  7. TRANSMISSION CABLE FROM LOAD CELL TO JUNCTION BOX SHALL BE IN 1 1/2" MINIMUM SIZE CONDUIT AT LEAST 24" FROM THE CLOSEST ELECTRICAL LINE. THEY MAY CROSS AT 90° ONLY.
  8. **CAUTION:** DO NOT WELD ON STRUCTURE WHILE THE LOAD CELLS ARE IN THE SYSTEM.
  9. REINFORCING ROD AND WELDED WIRE MESH ARE NOT FURNISHED BY CARDINAL SCALE MFG. CO. THE REBAR SHALL CONFORM TO ASTM A615, GRADE 60. THE WELDED WIRE MESH SHALL CONFORM TO ASTM A-185.
  10. TOP OF PIERS ARE TO BE SMOOTH AND LEVEL WITHIN ±1/8". (ALL PIERS ARE TO BE WITHIN 1/4")
  11. ITEMS 1 IS SUPPLIED BY CARDINAL SCALE MFG. CO. ONLY WHEN ORDERED.
  12. STUD LOCATING TEMPLATES ARE AVAILABLE AS OPTIONAL EQUIPMENT. SEE TEMPLATE LAYOUT (0502-D188-1A) FOR PLACEMENT SPECIFICATIONS.
  13. ANCHOR BOLTS NEED TO EPOXY IN TO CONCRETE, TO INSURE PROPER SCALE FUNCTION.



QTY.	QTY.	QTY.	ITEM	PART/DWG. NUMBER	DESCRIPTION	MATERIAL OR SOURCE	WT. EACH
8	6	6013-0065	HEX NUT		3/8-16 UNC-2B		.06
8	5	6007-0050	HEX HEAD BOLT		3/8-16 UNC-2B		.01
16	4	6021-0995	SCW FLAT-HEAD SOCKET CAP		7/16-14X1.0 Z/P		
4	3	0108-B104-08	ROCK STRIP - BOLT ON				6.2
2	2	0108-C103-0A	COPING ANGLE - BOLT ON RS				18.9
8	1	BY OTHERS	ANCHOR BOLT		7/8"-9UNC 2A X 11"		

QTY.	QTY.	QTY.	WT.	PARTS/MATERIAL LIST	
		63.2		PARTS/MATERIAL LIST	

UNLESS OTHERWISE SPECIFIED TOLERANCE ON DIMENSIONS ARE:  
 ANGLES ± 1/2"  
 INTEGERS/FRACTIONS ± 1/16 IN.  
 DECIMALS (X) ± .03 IN.  
 DECIMALS (XX) ± .01 IN.  
 DECIMALS (XXX) ± .005 IN.  
 NOTE: WHOLE NUMBERS MUST BE WRITTEN XX.000 TO INVOLVE DECIMAL TOLERANCES.

THIS DRAWING IS THE PROPERTY OF THE CARDINAL SCALE MFG. CO. AND SHALL NOT BE USED NOR REPRODUCED EITHER WHOLLY OR IN PART EXCEPT WITH WRITTEN AUTHORIZATION. ALL RIGHTS OF DESIGN OR INVENTION ARE RESERVED.

**Cardinal**  
 Cardinal Scale Manufacturing Co.  
 TITLE: **FOUNDATION PLAN**  
 SCALE: NTS  
 DR: ADB DATE: 10/23/2012  
 CH: DATE:  
 MODEL: 1217 LSC SHEET: 1 DWG. NO.: 0502-D201-0A REV.: B