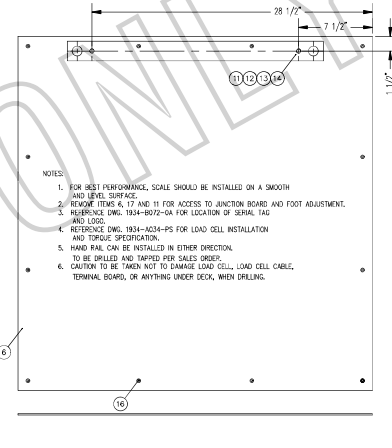
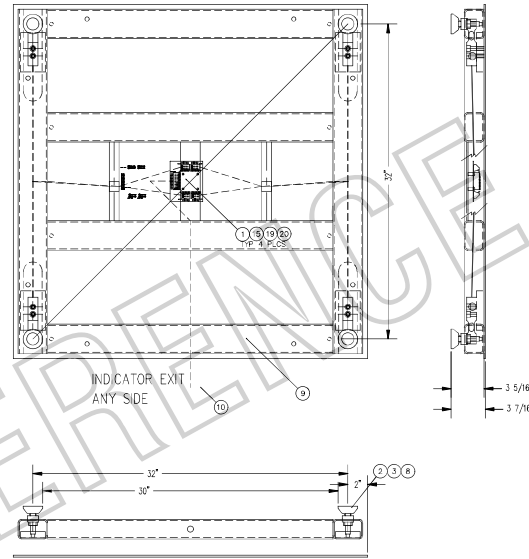
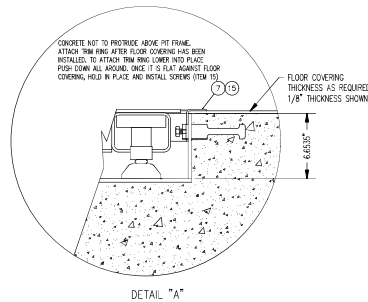
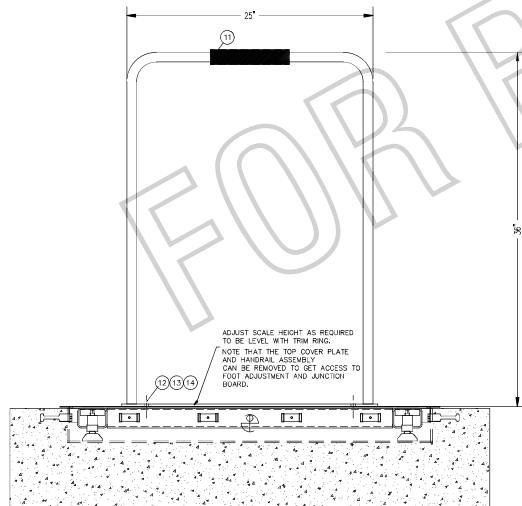


SECTION A-A



- NOTES:
1. FOR BEST PERFORMANCE, SCALE SHOULD BE INSTALLED ON A SMOOTH AND LEVEL SURFACE.
 2. REMOVE ITEMS 6, 17 AND 11 FOR ACCESS TO JUNCTION BOARD AND FOOT ADJUSTMENT.
 3. REFERENCE DIM. 1034-8022-0A FOR LOCATION OF SERIAL TAG AND LOGO.
 4. REFERENCE DIM. 1034-8022-0A FOR LOAD CELL INSTALLATION AND TYPICAL SPECIFICATION.
 5. HAND RAIL CAN BE INSTALLED IN OTHER DIRECTION TO BE DRILLED AND TAPPED FOR SALES ORDER.
 6. CAUTION TO BE TAKEN NOT TO DAMAGE LOAD CELL, LOAD CELL CABLE, TERMINAL BOARD, OR ANYTHING UNDER DECK, WHEN DRILLING.

SECTION B-B



222	213	WT.	PARTS/MATERIAL LIST			
UNLESS OTHERWISE SPECIFIED TOLERANCE ON DIMENSIONS ARE:			CARDINAL DETECTO BELT-WAY			
ANGLES			± 1/2°			
INTEGERS/FRACTIONS			± 1/16 IN.			
DECIMALS (.01)			± .03 IN.			
DECIMALS (.00)			± .01 IN.			
DECIMALS (.000)			± .005 IN.			
NOTE: WHOLE NUMBERS MUST BE WRITTEN X1,000 TO INDICATE DECIMAL TOLERANCES.			DRAWING ASSEMBLY			
THIS DRAWING IS THE PROPERTY OF THE CARDINAL SCALE MFG. CO. AND SHALL NOT BE USED FOR REPRODUCTION EITHER WHOLLY OR IN PART EXCEPT WITH WRITTEN AUTHORIZATION. ALL RIGHTS OF DESIGN OR INVENTION ARE RESERVED.			DR. GPL	DATE 12/21/16	D	
MODEL ID-3636S-XXXX			SHEET 1 OF 1	DWG. NO. 1914-0028-0A	REV. E	